

HEADQUARTERS 306TH BOMBARDMENT GROUP (H)  
Office of the Intelligence Officer  
United States Forces

(D-A-6)

AFPO 557  
29 November, 1944

SUBJECT: Intelligence Narrative  
Mission: Misburg

TO : Commanding Officer, 306th Bombardment Group (H)

1. Narrative

306th flew 34 a/c plus 2 PFF as 40 "B". Route was approximately as briefed. Felixstowe 1110; Dutch coast 5237N - 0437E, 1149 hours. Followed group ahead to an IP at 5747N - 0946E at 1252 hours; target 1302; Dutch coast 5237N - 0437E, 1435; Clacton 1534; Base 1610.  
Buckeye Red announced target coverage 10/10 and that bombing could be done from briefed altitudes.

Both H2X a/c worked satisfactorily throughout mission.

2. Fighter Opposition and Fighter Support

No enemy fighter opposition encountered.

Fighter support was picked up about ten minutes from the English coast and gave continuous and close cover throughout mission.

3. A.A. Gun Fire

Meager, inaccurate, low A.A. gun fire at target appeared to be tracking chaff. Meager, tracking A.A. gun fire, quite close to formation near coast in and out, was observed to come from 5236N - 0443E. No damage to a/c of this Group.

4. Bombing

Bombing was by PFF through 10/10 cloud. All three squadrons dropped on leader. Photos show no ground detail.

5. Nickels

A/c 563-N, pilot Lt. W.J. Davis, dropped 10 T226 on Misburg.

6. Weather

2 to 5/10 from enemy coast to Duxner Lake area, then 10/10 around target and back to about 8 degrees east. Light, non-persistent contrails at 27,000 feet.

7. A/C Returning Early

A/c 975-F, pilot R.H. Brown, turned back at 1036 hours at 5125N - 0110W.  
Brought back 12 x 500.

A/c 287-V, pilot Cation, turned back at 1135 hours at 5226N - 0345E.  
Brought back 12 x 500.

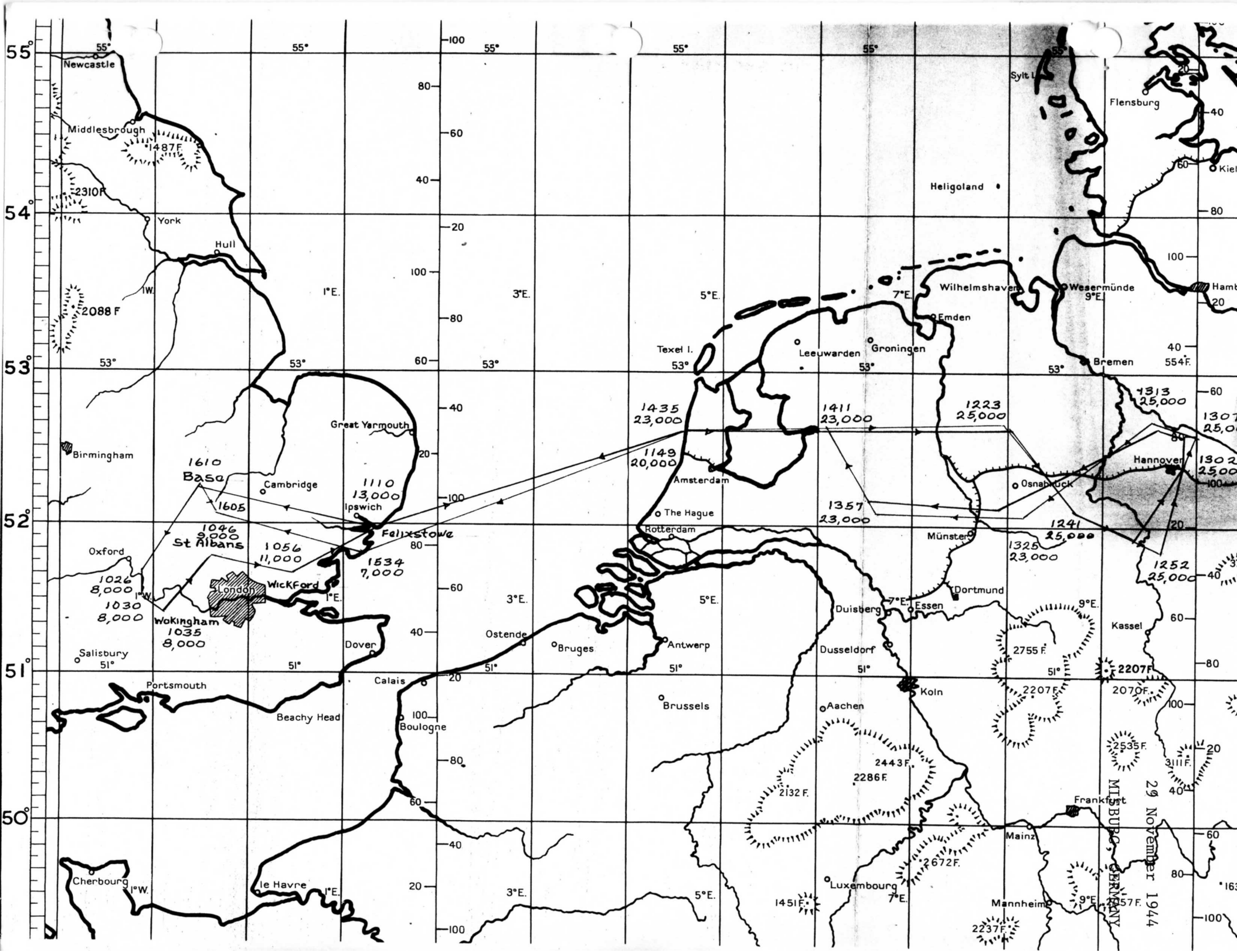
A/c 412-T, pilot Hatch, turned back at 1159 hours at 5237N - 0558E.  
Jettisoned 12 x 500 at 5236N - 0425E.

8. A/C in Distress

Two P-51's were reported to have collided and exploded at 1203 hours, 5 miles northwest of Zwolle en route in.

JOHN A. DAIRNSFATHER,  
Major, Air Corps,  
Group B-2.

DECLASSIFIED PER EXECUTIVE ORDER 12356, Section 3.3, DATE 1/18/91 BY RLB/JAC  
5005  
MARA Date 1/18/91  
EXECUTIVE ORDER 12356, Section 3.3, DATE 7/4/50  
MARA Date 1/18/91



1610 Basa  
 1605  
 1046 9,000 St Albans  
 1056 11,000  
 1110 13,000 Ipswich  
 1534 7,000  
 1026 8,000 Oxford  
 1030 8,000 Wokingham  
 1035 8,000 London  
 1046 9,000

1435 23,000  
 1411 23,000  
 1223 25,000  
 1149 20,000  
 1357 23,000  
 1241 25,000  
 1325 23,000  
 1252 25,000  
 1313 25,000  
 1307 25,000  
 1302 25,000  
 2755 F  
 2207 F  
 2070 F  
 2535 F  
 3111 F  
 2443 F  
 2286 F  
 2132 F  
 2672 F  
 1451 F  
 2237 F

MILBUDG. SHANNON  
 29 November 1944

DECLASSIFIED PER EXECUTIVE ORDER 12356, Section 3.3, 115005  
By RLB/JAC NARA Date 1/8/99

40th "B"  
LEAD

Clouds just before I.P.

Clouds before Dumpy Lake

(PFF) Target

Formatic 29-11-44

McKinney  
Schneider  
124-W PFF

✓  
course good  
OK

C.W. No list

Ruffin ✓  
575-X

McCaullie \* ✓  
438-U

Denny ✓  
203-Y PFF

(OK)

Breed \* ✓  
683-Q

Bruton ✓  
633-Z

Clayes ✓  
711-D

Eros ✓  
466-Q

Hatch  
412-T

Hodges ✓  
133-W

38' s in Target Area

Martin \* ✓  
474-V

Coyne ✓  
384-L

B.B. Back

Coast going in and out

Bruckey led 10/10 + bomb from briefed alt

all support no in fighters moderate & dense

no holes 10/10

way down

new I.P.

40th "B"  
LOW

Wood \* ✓  
397-0

Reioux ✓  
418-J

Borges \* ✓  
155-J

Stewart ✓  
019-T

Sutherland \* ✓  
611-G

Kirby ✓  
616-X

Lindsay ✓  
963-P

Smythe ✓  
467-Z

Overstreet ✓  
840-Y

Davis, J.L. ✓  
063-A

Roth ✓  
674-B

Brown, H. ✓  
153-G

Best looking in action

all down

40th "B"  
HIGH

Laughlin ✓  
557-Y

Carrazzone ✓  
143-P

Murphy \* ✓  
301-U

Doman \* ✓  
690-M

Cardon \* ✓  
515-0

Rozett \* ✓  
600-G

Erne ✓  
185-J

Brown, R H \* ✓  
975-J

Conlin ✓  
578-D

Davis, W. ✓  
563-N

NICKELS

Chels. Bombardment

Mattson \* ✓  
619-S

Cation ✓  
287-V

DECLASSIFIED PER EXECUTIVE ORDER 12356, Section 3.3, 115005

By RLB/JAC NARA Date 1/8/91

Cut + dried

Pff flak meager - (1-28)

1st. 1 plane - Rigwell 381-

2nd 3 -

3rd 40 -

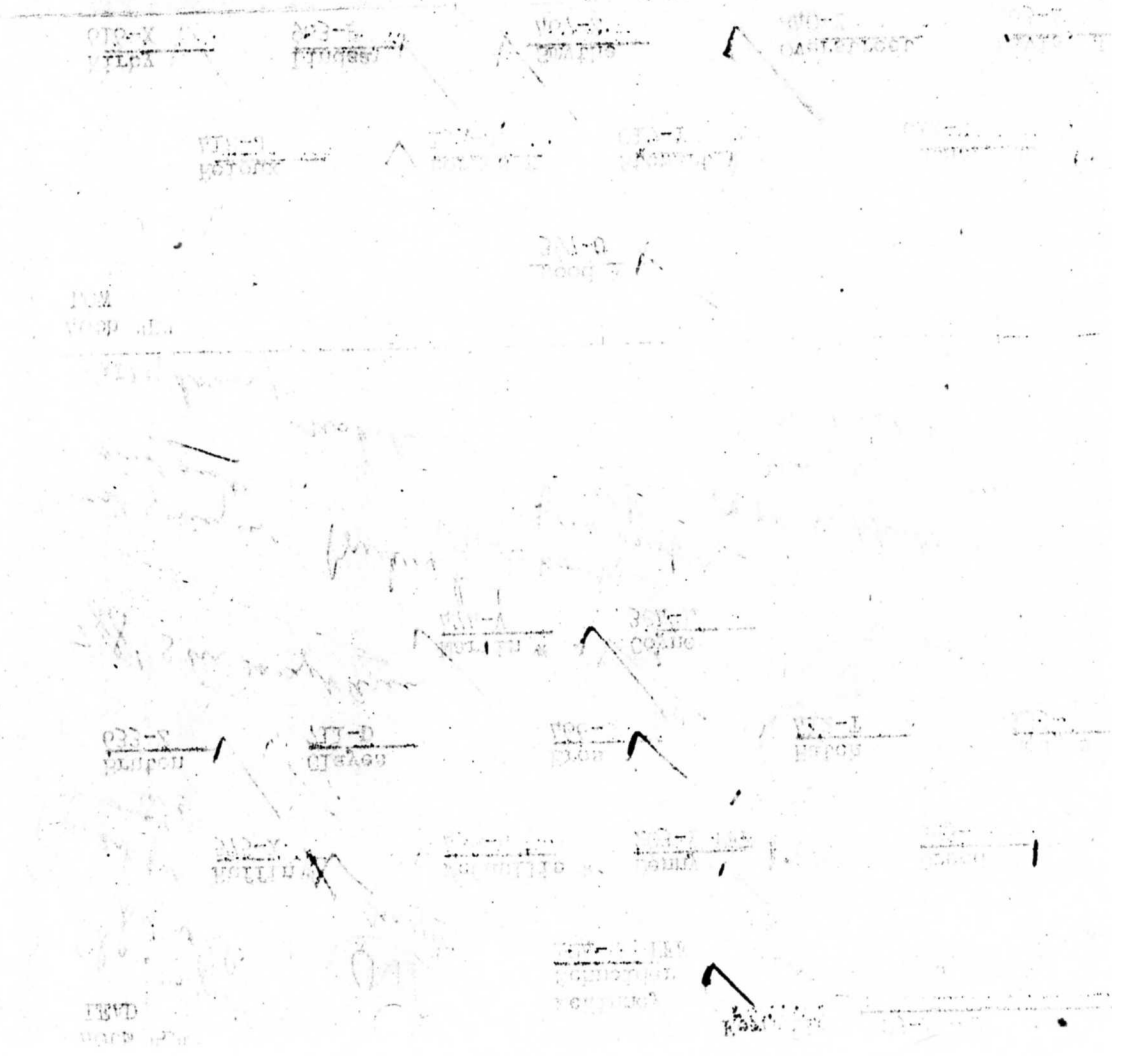
0 Damage

2 P51's collided  
A-1's  
talkin'

12<sup>03</sup> 5 miles NW  
of 2 walls  
coming in

almost 0

51's 6 more



SQUADRON 367thMISSION LOADING LIST  
MISSION NUMBER 261 DATE29 November 1944A/C Number 42-107063Total Flying Time 8:05

(P) Davis, J.H. 2nd Lt.  
 (CP) Lenn, D.R. 2nd Lt.  
 (N) Bursthous, M.S. 2nd Lt.  
 (B) Dunn, J.L. Sgt.  
 (E) Ovens, G.H. T/Sgt.  
 (RO) Groover, R.N. T/Sgt.  
 (G) Workman, E. S/Sgt.  
 (G) Russell, N.F. S/Sgt.  
 (G) Gillispie, W.T. S/Sgt.  
 (G)

A/C Number 42-37840Total Flying Time 8:00

(P) Overstreet, R.B. 2nd Lt.  
 (CP) Shepard, F.K. 2nd Lt.  
 (N) Fortman, F.J. 2nd Lt.  
 (B) Coleman, J. T/Sgt.  
 (E) Davis, S.J. S/Sgt.  
 (G) Bearden, W.B. S/Sgt.  
 (G) Petrillo, G.W. S/Sgt.  
 (G) Dempsey, M.J. S/Sgt.  
 (G) Richards, L.R. S/Sgt.  
 (G)

A/C Number 44-6563Total Flying Time 7:45

(P) Davis, W.J. 2nd Lt.  
 (CP) Baley, V.F. 2nd Lt.  
 (N) Holland, D.J. 2nd Lt.  
 (B) Meyer, C.L. S/Sgt.  
 (E) Hammond, P.A. T/Sgt.  
 (RO) Mahoney, F.M. T/Sgt.  
 (G) Fyksen, G.E. S/Sgt.  
 (G) Martinez, J.L. S/Sgt.  
 (G) Revis, J. S/Sgt.  
 (G)

A/C Number 42-102578Total Flying Time 7:45

(P) Conlin, J.C. 2nd Lt.  
 (CP) Rowley, K.R. 2nd Lt.  
 (N) Malay, R.E. 2nd Lt.  
 (B) Smith, C.G. T/Sgt.  
 (E) Collins, E.F. T/Sgt.  
 (RO) Presti, D.L. T/Sgt.  
 (G) Joslin, L.G. S/Sgt.  
 (G) Amar, C.A. S/Sgt.  
 (G) Hulme, E.E. S/Sgt.  
 (G)

A/C Number 43-38683Total Flying Time 7:30

(P) Breed, R.L. 2nd Lt.  
 (CP) Smith, I.D. 2nd Lt.  
 (N) Anderson, F.W. 2nd Lt.  
 (B) Clark, E.R. F/O.  
 (E) Lothian, G.R. Sgt.  
 (RO) Grabler, R.W. Sgt.  
 (G) Ursel, R. Sgt.  
 (G) Tynan, J.C. Sgt.  
 (G) Paine, C.E. Sgt.  
 (G)

A/C Number 42-97133Total Flying Time 7:25

(P) Hodges, G. 2nd Lt.  
 (CP) Fawelke, R. 2nd Lt.  
 (N) Strand, N. F/O.  
 (B) McCommaughey, N. S/Sgt.  
 (E) Pacchioni, V. S/Sgt.  
 (RO) Rohinsky, A. Sgt.  
 (G) DeZolt, S. Sgt.  
 (G) Gibson, O. S/Sgt.  
 (G) Mensie, F. S/Sgt.  
 (G)

SQUADRON 367th

MISSION LOADING LIST  
MISSION NUMBER 261 DATE

9 November 1944

A/C Number 43-37611

Total Flying Time 7:15

- (P) Sutherland, E.B. 2nd Lt.
- (CP) Field, J.K. 2nd Lt.
- (N) Allen, R.D. F/O.
- (B) Todd, E.L. 1st Lt.
- (E) Maddock, G.M. T/Sgt.
- (RO) Geving, M.K. T/Sgt.
- (G) Vicknair, G.A. S/Sgt.
- (G) Sanders, W.H. S/Sgt.
- (G) Starbuck, W.G. T/Sgt.
- (G) \_\_\_\_\_
- (G) \_\_\_\_\_

A/C Number 44-6515

Total Flying Time 7:00

- (P) Cardon, R.L. 1st Lt.
- (CP) Prokop, L.P. 2nd Lt.
- (N) Kaufman, W.B. F/O.
- (B) Kelly, P.E. 1st Lt.
- (E) Glites, F.A. T/Sgt.
- (RO) Fox, E.S. T/Sgt.
- (G) Porozinski, W.J. T/Sgt.
- (G) Grede, R.E. S/Sgt.
- (G) Miller, H. T/Sgt.
- (G) \_\_\_\_\_
- (G) \_\_\_\_\_

A/C Number 43-38412

Total Flying Time ABORTION-- 5:00

- (P) Hatch, G.L. 2nd Lt.
  - (CP) Miessler, W.E. 2nd Lt.
  - (N) Skonieczny, E.A. 2nd Lt.
  - (B) Young, J.K. S/Sgt.
  - (E) Regulla, J.S. S/Sgt.
  - (RO) Search, R.W. S/Sgt.
  - (G) Rehman, G.W. S/Sgt.
  - (G) Mitchell, F.R. S/Sgt.
  - (G) Sirov, R.T. S/Sgt.
  - (G) \_\_\_\_\_
  - (G) \_\_\_\_\_
- ABORTION*

A/C Number \_\_\_\_\_

Total Flying Time \_\_\_\_\_

- (P) \_\_\_\_\_
- (CP) \_\_\_\_\_
- (N) \_\_\_\_\_
- (B) \_\_\_\_\_
- (E) \_\_\_\_\_
- (RO) \_\_\_\_\_
- (G) \_\_\_\_\_
- (G) \_\_\_\_\_
- (G) \_\_\_\_\_
- (G) \_\_\_\_\_
- (G) \_\_\_\_\_

A/C Number \_\_\_\_\_

Total Flying Time \_\_\_\_\_

- (P) \_\_\_\_\_
- (CP) \_\_\_\_\_
- (N) \_\_\_\_\_
- (B) \_\_\_\_\_
- (E) \_\_\_\_\_
- (RO) \_\_\_\_\_
- (G) \_\_\_\_\_
- (G) \_\_\_\_\_
- (G) \_\_\_\_\_
- (G) \_\_\_\_\_
- (G) \_\_\_\_\_

A/C Number \_\_\_\_\_

Total Flying Time \_\_\_\_\_

- (P) \_\_\_\_\_
- (CP) \_\_\_\_\_
- (N) \_\_\_\_\_
- (B) \_\_\_\_\_
- (E) \_\_\_\_\_
- (RO) \_\_\_\_\_
- (G) \_\_\_\_\_
- (G) \_\_\_\_\_
- (G) \_\_\_\_\_
- (G) \_\_\_\_\_
- (G) \_\_\_\_\_

SQUADRON 368th

MISSION LOADING LIST  
MISSION NUMBER 261

DATE 29, 1944

A/C Number 44-8203  
Total Flying Time 7:45

A/C Number 42-3147h  
Total Flying Time 7:35

- (P) 1st Lt. Denny, R.R.
- (CP) 1st Lt. Hastings, E.W.
- (N) 2nd Lt. Pavin, J.M.
- (B) 1st Lt. Thayer, R.H.
- (E) T/Sgt. Moody, J.C.
- (RO) T/Sgt. Foster, G.W.
- (G) T/Sgt. Polderman, H.A.
- (G) S/Sgt. Mansfield, R.E.
- (G) Capt. Seifried, E.J.
- (RN) (G) 1st Lt. Lucas, F.K.

- (P) 2nd Lt. Martin, J.E.
- (CP) 2nd Lt. Holden, W.C.
- (N) 2nd Lt. Wilf, J.M.
- (B) F/O Ulrich, R.C.
- (E) T/Sgt. Harrington, R.E.
- (RO) T/Sgt. Kraus, K.W.
- (G) S/Sgt. Davissen, L.E.
- (G) S/Sgt. Bare, T.L.
- (G) S/Sgt. Lawrenz, J.A.

A/C Number 44-6166  
Total Flying Time 7:25

A/C Number 43-3838h  
Total Flying Time 7:25

- (P) 2nd Lt. Eres, K.N.
- (CP) 2nd Lt. Maenner, A.J.
- (N) 2nd Lt. Pollard, T.E.
- (B) 2nd Lt. Townsend, D.S.
- (E) T/Sgt. Disko, S.
- (G) T/Sgt. Ozee, R.A.
- (G) S/Sgt. Tennant, R.F.
- (G) S/Sgt. Swindle, R.V.
- (G) S/Sgt. Dearing, A.R.

- (P) 2nd Lt. Coyne, J.M.
- (CP) 2nd Lt. Schroeder, R.W.
- (N) 2nd Lt. Dornshkin, I.
- (B) 1st Lt. Hall, H.L.
- (E) T/Sgt. Smith, Donald G.
- (RO) T/Sgt. Decker, R.K.
- (G) S/Sgt. Spraggins, D.W.
- (G) S/Sgt. Briszi, G.A.
- (G) S/Sgt. Clement, B.V.

A/C Number 43-37575  
Total Flying Time 7:30

A/C Number 43-37633  
Total Flying Time 7:30

- (P) 2nd Lt. Ruffin, W.A.
- (CP) 2nd Lt. Howe, G.B.
- (N) 2nd Lt. Holden, I.B.
- (B) 1st Lt. Brian, J.E.
- (E) T/Sgt. McCarthy, D.E.
- (RO) T/Sgt. Edlund, L.E.
- (G) S/Sgt. Culp, C.B.
- (G) S/Sgt. Atwood, R.G. (IO)
- (G) S/Sgt. Brunetti, P.

- (P) 2nd Lt. Bruton, M.J.
- (CP) 2nd Lt. Owens, S.M.
- (N) 2nd Lt. Holt, C.O.
- (B) 2nd Lt. Schwartz, B.R.
- (E) T/Sgt. Findley, E.L.
- (RO) T/Sgt. Mills, R.D.
- (G) S/Sgt. Hop, Y.
- (G) S/Sgt. Pesterfield, L.F.
- (G) S/Sgt. Fredericks, J.J.

SQUADRON

368th

MISSION LOADING LIST  
MISSION NUMBER 261

DATE

29, 1944

A/C Number 43-38711  
Total Flying Time 7:20

- (P) 2nd Lt. Claeys, R.H.
- (CP) 1st Lt. Edwards, R.L.
- (N) 2nd Lt. Seiford, F.M.
- (B) 2nd Lt. Miller, E.F.
- (E) T/Sgt. Morley, M.C.
- (RO) T/Sgt. Girardot, T.C.
- (G) S/Sgt. Swope, P.D.
- (G) S/Sgt. Johnson, R.L.
- (G) S/Sgt. Peatross, R.W.
- (G)
- ( )

A/C Number 43-38438  
Total Flying Time 7:30

- (P) 2nd Lt. McCaulie, W.T.
- (CP) 2nd Lt. Gregg, R.T.
- (N) 2nd Lt. Tomlinson, R.S.
- (B) T/Sgt. Bennett, S.D.
- (E) T/Sgt. Roy, R.W.
- (RO) T/Sgt. Winborn, J.R.
- (G) S/Sgt. Breeden, L.G.
- (G) S/Sgt. White, C.R.
- (G) S/Sgt. Mathes, S.M.
- (G)
- ( )

A/C Number \_\_\_\_\_  
Total Flying Time \_\_\_\_\_

- (P) \_\_\_\_\_
- (CP) \_\_\_\_\_
- (N) \_\_\_\_\_
- (B) \_\_\_\_\_
- (E) \_\_\_\_\_
- (RO) \_\_\_\_\_
- (G) \_\_\_\_\_
- (G) \_\_\_\_\_
- (G) \_\_\_\_\_
- (G) \_\_\_\_\_
- ( )

A/C Number \_\_\_\_\_  
Total Flying Time \_\_\_\_\_

- (P) \_\_\_\_\_
- (CP) \_\_\_\_\_
- (N) \_\_\_\_\_
- (B) \_\_\_\_\_
- (E) \_\_\_\_\_
- (RO) \_\_\_\_\_
- (G) \_\_\_\_\_
- (G) \_\_\_\_\_
- (G) \_\_\_\_\_
- (G) \_\_\_\_\_
- ( )

A/C Number \_\_\_\_\_  
Total Flying Time \_\_\_\_\_

- (P) \_\_\_\_\_
- (CP) \_\_\_\_\_
- (N) \_\_\_\_\_
- (B) \_\_\_\_\_
- (E) \_\_\_\_\_
- (RO) \_\_\_\_\_
- (G) \_\_\_\_\_
- (G) \_\_\_\_\_
- (G) \_\_\_\_\_
- (G) \_\_\_\_\_
- ( )

A/C Number \_\_\_\_\_  
Total Flying Time \_\_\_\_\_

- (P) \_\_\_\_\_
- (CP) \_\_\_\_\_
- (N) \_\_\_\_\_
- (B) \_\_\_\_\_
- (E) \_\_\_\_\_
- (RO) \_\_\_\_\_
- (G) \_\_\_\_\_
- (G) \_\_\_\_\_
- (G) \_\_\_\_\_
- (G) \_\_\_\_\_
- ( )



A/C Number 42-31143  
Total Flying Time 7:30

- (P) Carrazzone, G. M. 1st. Lt.
- (CP) Reinhart, L. H. 2nd. Lt.
- (N) Israel, H. S. "
- (B) Bodnaruk, J. "
- (E) Keith, G. T. T/Sgt.
- (RO) Gallagher, P. M. "
- (G) Holthaus, R. A. S/Sgt.
- (G) Fitterman, I. H. "
- (G) Carlson, N. P. "
- (G)
- (G)

A/C Number 42-102557  
Total Flying Time 7:40

- (P) Laughlin, H. L. 1st. Lt.
- (CP) Rogers, W. L. 2nd. Lt.
- (N) Bush, C. F. "
- (B) Gailey, B. S. "
- (E) Homesley, J. A. T/Sgt.
- (RO) Hickman, W. L. "
- (G) Mathews, J. A. S/Sgt.
- (G) Ukele, C. K. "
- (G) Keuer, V. N. "
- (G)
- (G)

A/C Number 43-37619  
Total Flying Time 7:35

- (P) Mattson, H. C. 2nd. Lt.
- (CP) Kruger, R. J. "
- (N) Bryan, J. A. "
- (B) Shaw, L. C. F/O
- (E) Jenkins, J. M. Sgt.
- (RO) Ramirez, R. Sgt.
- (G) Crowton, V. T. "
- (G) Zymank, J. T. "
- (G) Koubeck, D. S. "
- (G)
- (G)

A/C Number 42-97301  
Total Flying Time 7:45

- (P) Murphy, J. L. Capt.
- (CP) Clark, W. W. 2nd. Lt.
- (N) Lateano, G. T. "
- (B) Kerr, G. T. "
- (E) Cecere, A. R. T/Sgt.
- (RO) Jagnow, L. W. "
- (G) McGue, W. J. S/Sgt.
- (G) Bohren, D. F. "
- (G) Peterson, L. J. T/Sgt.
- (G)
- (G)

A/C Number 43-37600  
Total Flying Time 7:30

- (P) Rozett, W. P. 2nd. Lt.
- (CP) Strode, L. L. "
- (N) Christenson, J. H. 2nd. Lt.
- (B) Kramer, M. P. "
- (E) Hall, E. C. S/Sgt.
- (RO) Durham, J. E. "
- (G) Shipley, W. A. "
- (G) Arbeiter, E. G. "
- (G) Sheldon, R. H. "
- (G)
- (G)

A/C Number 43-38690  
Total Flying Time 7:30

- (P) DOMAN, W. M. 1st. Lt.
- (CP) Woods, R. H. 2nd. Lt.
- (N) Fitzsimmons, J. J. 2nd. Lt.
- (B) Lanus, W. M. "
- (E) Barron, G. G. T/Sgt.
- (RO) Thwaite, J. E. S/Sgt.
- (G) Richards, E. P. "
- (G) Parker, B. "
- (G) Stojkov, S. W. "
- (G)
- (G)

SQUADRON 369th.

MISSION LOADING LIST

MISSION NUMBER 261

DATE

29, 1944

A/C Number 185  
Total Flying Time 7:35

- (P) Erne, N. A. 2nd. Lt.
- (CP) Miller, N. H. "
- (N) Hudson, F. M. "
- (B) Good, G. D. "
- (E) Marchese, L. A. Sgt.
- (RO) Gattis, R. R. "
- (G) Parton, S. G. "
- (G) Holdson, G. R. "
- (G) Tiff, R. L. "
- (G)

A/C Number 287\*\*\*\*\*ABORTION\*\*\*\*\*  
Total Flying Time 3:40 \*\*\*\*\*

- (P) Cation, J. L. 2nd. Lt.
- (CP) Collins, J. E. "
- (N) Null, M. B. "
- (B) Seckinger, C. L. 2nd. Lt.
- (E) Duggan, C. E. Sgt.
- (RO) Brown, B. M. "
- (G) Bowman, J. E. "
- (G) Tulcus, W. "
- (G) Smith, L. L. "
- (G) \*\*\*\*\*ABORTION\*\*\*\*\*
- (G)

A/C Number 44-8124  
Total Flying Time 7:30

- (P) SCHNIEDER, G. C. 1st. Lt.
- (CP) McKinney, J. A. Maj.
- (N) Kester, A. A. 1st. Lt.
- (B) Dillon, J. P. "
- (E) Reasa, H. W. T/Sgt.
- (G) Farmer, H. N. "
- (G) Sneed, P. L. S/Sgt.
- (G) Beach, R. "
- (G) Correll, W. E. 2nd. Lt. (368th.)
- (G) Wagoner, P. C. " "
- (RN) Peters, L. F. 1st. Lt.

A/C Number  
Total Flying Time

- (P)
- (CP)
- (N)
- (B)
- (E)
- (RO)
- (G)
- (G)
- (G)
- (G)
- (G)

A/C Number 42-102975\*\*\*\*\*ABORTION\*\*\*  
Total Flying Time 2:20\*\*\*\*\*

- (P) Brown, R. H. 1st. Lt.
- (CP) Giglio, W. F. "
- (N) Walden, J. R. 2nd. Lt.
- (B) Moore, J. R. 1st. Lt.
- (E) Fann, J. J. T/Sgt.
- (RO) Ohm, R. A. Pvt.
- (G) Baasel, J. W. S/Sgt.
- (G) Bollard, J. W. "
- (G) Goetz, R. L. "
- (G) \*\*\*\*\*ABORTION\*\*\*\*\*
- (G)

A/C Number  
Total Flying Time

- (P)
- (CP)
- (N)
- (B)
- (E)
- (RO)
- (G)
- (G)
- (G)
- (G)
- (G)

SQUADRON XXX 423rdMISSION LOADING LIST  
MISSION NUMBER 261DATE 29 November, 1944A/C Number 43-39963Total Flying Time 8:00

(P)	Lindsay, E. J.	2nd Lt.
(CP)	Millen, M. L.	2nd Lt.
(N)	Gunkel, W. W.	2nd Lt.
(B)	German, P. E.	2nd Lt.
(E)	Jarvis, R. D.	S/Sgt.
(RO)	Cullen, J. M.	T/Sgt.
(G)	Craig, E. D.	S/Sgt.
(G)	Schuettpelz, R. H.	S/Sgt.
(G)	Bagwell, L. L.	S/Sgt.
(G)		
(G)		

A/C Number 43-38467Total Flying Time 7:55

(P)	Smythe, C. P.	2nd Lt.
(CP)	Magusiak, S. J.	2nd Lt.
(N)	Howe, D. O.	2nd Lt.
(B)	Gorrell, D. H.	F/O
(E)	Cathey, J. J.	T/Sgt.
(RO)	West, H. C.	T/Sgt.
(G)	Franklin, G. B.	S/Sgt.
(G)	Kimsey, T. E.	S/Sgt.
(G)	Priemann, W. W.	S/Sgt.
(G)		
(G)		

A/C Number 43-38019Total Flying Time 8:00

(P)	Stewart, F. J.	2nd Lt.
(CP)	Merrill, B. B.	2nd Lt.
(N)	Smolenski, E. S.	F/O
(B)	Dealy, A. G.	2nd Lt.
(E)	Erwin, D. D.	T/Sgt.
(RO)	Hathaway, J. R.	T/Sgt.
(G)	Herold, E. C.	S/Sgt.
(G)	Westmoreland, M. E.	S/Sgt.
(G)	Coomer, J. A.	S/Sgt.
(G)		
(G)		

A/C Number 42-38155Total Flying Time 8:15

(P)	Borges, W.	2nd Lt.
(CP)	Blackshaw, K. D.	2nd Lt.
(N)	Goncher, S.	F/O
(B)	Jordan, S. C.	1st Lt.
(E)	Bitschek, W. H.	T/Sgt.
(RO)	Hill, R. A.	T/Sgt.
(G)	Wehunt, P. H.	S/Sgt.
(G)	Richardson, E.	S/Sgt.
(G)	Lynch, W. H.	S/Sgt.
(G)		
(G)		

A/C Number 43-38153Total Flying Time 8:00

(P)	Brown, H.	1st Lt.
(CP)	Phillips, D.	2nd Lt.
(N)	Guilfoyle, W.	2nd Lt.
(B)	Berry, L.	2nd Lt.
(E)	Thomas, T.	T/Sgt.
(RO)	Fatica, C.	T/Sgt.
(G)	Barker, M.	S/Sgt.
(G)	Beck, R.	S/Sgt.
(G)	Miller, R. T., Jr.	S/Sgt.
(G)		
(G)		

A/C Number 43-38674Total Flying Time 8:00

(P)	Roth, H. G.	2nd Lt.
(CP)	Stetler, W. M.	2nd Lt.
(N)	Cullbert, S.	F/O
(B)	Garberich, R. C.	F/O
(E)	Scammon, H. L.	T/Sgt.
(RO)	Coleman, R. M.	T/Sgt.
(G)	Henson, H. H.	S/Sgt.
(G)	Finch, E.	S/Sgt.
(G)	Linke, E. S.	S/Sgt.
(G)		
(G)		

INTERROGATION FORM

SQUADRON ~~227XXX21~~ 369 ~~422X~~ A/C Number 124 ~~Letter~~ W Date 29/11/44

Bomb Load 12 x 500 H.E. Incend.

Position in Formation

Time Took Off 0919 Time Landed

	X	X	X	X	
X	X	X	X	X	LEAD
X	X	X	X	X	
X	X	X	X	X	

40" B'

1. HOT NEWS to be phoned in? Yes No  
Details:

CREW: Give Rank and Initials

Friendly A/C in any kind of distress:  
(Give position, time, altitude, full details)

- Major J.A. McKinney  Pilot
- 1st Lt. G.C. Schneider  Co-1
- 2nd Lt. P.C. Wagoner  Co-2
- 1st Lt. A.A. Kester  Nav.
- 1st Lt. J.P. Dillon  Bomb
- T/Sgt. M.N. Farmer  Radi
- T/Sgt. J.W. Reese  Top
- S/Sgt. P.L. Snead  WG ~~XXXX~~
- S/Sgt. R. Beach  R/W
- 1st Lt. L.F. Peters  RN ~~XXXX~~
- 2nd Lt. W.E. Correll  Tail

2. TARGET ATTACKED:

Primary Time: 1302  
 Alternate Height: 25,000  
 Last Resort Heading: 017°  
 (circle)  
 Duration Bomb Run: 600'

3. Number of BOMBS dropped on target: all Jettisoned: Returned: Abortive:

4. Observed RESULTS OF BOMBING: (For this plane or others)

Own Bombs: PFF -

Any Nickels: Yes No  
 Number bombs dropped \_\_\_\_\_  
 Number Bombs returned \_\_\_\_\_

Other Bombing:

5. any PHOTOGRAPHS taken: Yes? No?

6. GROUND TARGETS ATTACKED BY GUNFIRE AND RESULTS:

7. ROUTE: (If different than ordered) (If ABORTIVE give time, place, height of turn; reason for returning early, and Disposition of bombs.)

*Never heard Berkey Blue; Berkey Red, about 15 mins before I.P. Said 10/10 & could bomb from briefed altitude.*

8. WEATHER: (If it affected mission) as briefed - 2 to 5/10 big open patches until Dummer Lake - 10/10. - tops 14,000 - non consistent contrails at altitude

9. FLAK: Encountered on way out, at target and on way home.

Time	Place	Height of A/C	Type (light heavy), intense, moderate or slight.	Color of Bursts	Location of Bursts in relation to A/C	Accuracy
------	-------	---------------	--	-----------------	---------------------------------------	----------

*Target - meager, tracking, inaccurate*  
*5236N-0443E. 4 gun battery tracking in & out - didn't reach*

Crew observations about Flak:

DECLASSIFIED PER EXECUTIVE ORDER 12356, Section 3.3, 115005  
 BY RLB/BAC  
 NARA Date 1/8/99

INTERROGATION FORM

SQUADRON ~~368~~ 368 ~~XXXXXXXX~~ A/C Number 203 Letter Y Date 29/11/44

Bomb Load 12x 500 <sup>Smoke</sup> H.E. Incend.

Position in Formation

	X	X	X	X
X	X	X	X	X
X	X	X	X	X
X	X	X	X	X

40th "B"  
Lead.

Time Took Off 0919 Time Landed \_\_\_\_\_

1. HOT NEWS to be phoned in? Yes No  
Details:

CREW: Give Rank and Initials

Friendly A/C in any kind of distress:  
(Give position, time, altitude, full details)

1st Lt. R.R. Denny Pilot

1st Lt. E.W. Hastings Co-r

2nd Lt. J.M. Pavin Nav.

1st Lt. R.H. Thayer Bomb.

T/Sgt. C.N. Foster Radi

T/Sgt. J.C. Moody Top

1st Lt. F.K. Lucas ~~FN~~ ~~XXXXXXXX~~

T/Sgt. H.A. Polderman R/W

Capt. E.J. Seifried L/W

S/Sgt. R.E. Mansfield Tail

2. TARGET ATTACHED:

Primary Time: 1301

Alternate Height: 25,200

Last Resort Heading: ~~22~~ 11 mag  
(circle)

Duration Bomb Run:

3. Number of BOMBS dropped on target: Jettisoned: Returned: abortive:

4. Observed RESULTS OF BOMBING: (For this plane or others)

Own Bombs: <sup>all</sup> ~~Salvaged~~ half of bombs 1-2 sec - late  
Others on lead - at time of lead dropped first bombs  
Any Nickels: Yes No  
Number bombs dropped \_\_\_\_\_  
Number Bombs returned \_\_\_\_\_

5. Any PHOTOGRAPHS taken: Yes? No?

6. GROUND TARGETS ATTACKED BY GUNFIRE AND RESULTS:

7. ROUTE: (If different than ordered) (If ALORIVE give time, place, height of turn; reason for returning early, and Disposition of bombs.)

Overrun I.P. 10 mi. —

8. WEATHER: (If it affected mission)

9. FLAK: Encountered on way out, at target and on way home.

Time	Place	Height of A/C	Type (light heavy), intense, moderate or slight.	Color of Bursts	Location Bursts in relation to A/C	Accuracy
------	-------	---------------	--	-----------------	------------------------------------	----------

Pass out 6-8 units

Target - late to mod macc

Crew observations about Flak:

DECLASSIFIED PER EXECUTIVE ORDER 12356, Section 3.3, 15005  
By RLB/JHC  
MARA Date 1/8/99

INTERROGATION FORM

SQUADRON ~~8670~~ ~~368~~ ~~28300000~~ A/C Number 1438 Letter U Date 29/11/44

Bomb Load 12 x 500 H.E. Incend.

Position in Formation

Time Took Off 0919 Time Landed 1617

		X	X	X	
X	X	X	X	X	X
X		X	X	X	
X	X			X	X

40° "B"  
Lead.

1. HOT NEWS to be phoned in? Yes No  
Details:

CRE.: Give Rank and Initials

Friendly A/C in any kind of distress:  
(Give position, time, altitude, full details)

2nd Lt. W.T. McCaulie	Pilot
2nd Lt. R.T. Gregg	Co-P
2nd Lt. R.S. Tomlinson	Nav.
T/Sgt. S.D. Bennett	Bomb
T/Sgt. J.R. Winborn	Radi
T/Sgt. R.W. Roy	Top
S/Sgt. L.B. Breeden	Ball
S/Sgt. S.M. Mathes	B/W
	L/W
S/Sgt. O.B. White	Tail

2. TARGET ATTACHED:

Primary Time: 1301/2  
Alternate Height: 25,000  
Last Resort Heading: 140M  
(circle)  
Duration Bomb Run: 360°

3. Number of BOMBS dropped on target: Jettisoned: Returned: abortive:  
All

4. Observed RESULTS OF BOMBING: (For this plane or others)

Own Bombs:

Any Nickels: Yes No  
Number bombs dropped \_\_\_\_\_  
Number Bombs returned \_\_\_\_\_

Other Bombing:

5. Any PHOTOGRAPHS taken: Yes? No? Hand Camera

6. GROUND TARGETS ATTACKED BY GUNFIRE AND RESULTS:

7. ROUTE: (If different than ordered) (If ALORIVE give time, place, height of turn; reason for returning early, and Disposition of bombs.)

*With group.*

8. WEATHER: (If it affected mission)

9. FLAK: Encountered on way out, at target and on way home.

Time	Place	Height of A/C	Type (light heavy), intense, moderate or slight.	Color of Bursts	Location of Bursts in relation to A/C	Accuracy
------	-------	---------------	--	-----------------	---------------------------------------	----------

Target low, left, Behind tracking mod. inaccurate obs. 5235-0450 3 yump att.

neague tracking at 2 walls in + out low vis

Crew observations about Flak: none at target on this group.

1 gem tracking 5237-0437 on route out 23,000 ft.

DECLASSIFIED PER EXECUTIVE ORDER 12356, Section 3.3, 1.5005  
By RLB/BAC NARA Date 1/8/91

DECLASSIFIED PER EXECUTIVE ORDER 12356, Section 3.3, L15005  
 By RLB/BAC NARA Date 1/8/91

INTERROGATION FORM

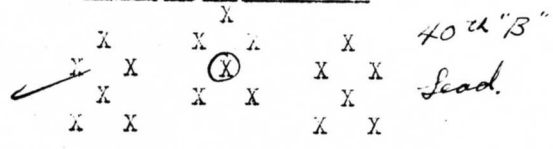
4

SQUADRON ~~XXXX~~ 368 ~~XXXXXX~~ A/C Number 466 Letter Q Date 29/11/44

Bomb Load 12 x 500 H.E. Incend.

Position in Formation

Time Tack Off 0919 Time Landed \_\_\_\_\_



1. HOT NEWS to be phoned in? Yes No  
Details:

CREW: Give Rank and Initials

Friendly A/C in any kind of distress:  
(Give position, time, altitude, full details)

- 2nd Lt. K.N. Eros Pilot
- 2nd Lt. A.J. Maenner Co-P
- 2nd Lt. T.E. Pollard Nav.
- 2nd Lt. D.S. Townsend Bomb
- T/Sgt. R.A. Uzee Radi.
- T/Sgt. S. Disko Top
- S/Sgt. R.F. Tennant Ball
- S/Sgt. A.B. Dearing R/W
- L/W
- S/Sgt. R.V. Swindle Tail

2. TARGET ATTACHED:

Primary Time: 1301  
 Alternate Height: 24900  
 Last Resort Heading: 015° M  
 (circle)  
 Duration bomb Run:

3. Number of BOMBS dropped on target: All Jettisoned: Returned: Abortive:

4. Observed RESULTS OF BOMBING: (For this plane or others)

Own Bombs:

Other Bombing:

Any Nickels: Yes No  
 Number bombs dropped \_\_\_\_\_  
 Number Bombs returned \_\_\_\_\_

5. Any PHOTOGRAPHS taken: Yes? No?

6. GROUND TARGETS ATTACKED BY GUNFIRE AND RESULTS:

7. ROUTE: (If different than ordered) (If ALTERNATE give time, place, height of turn; reason for returning early, and Disposition of bombs.)

with Grp.

8. WEATHER: (If it affected mission) 10/10 over target. 2 layers (top at 18000')  
 Clear over Chan.

9. FLAK: Encountered on way out, at target and on way home.

Time	Place	Height of A/C	Type (light heavy), intense, moderate or slight.	Color of Bursts	Location Bursts in relation to A/C	Accuracy
------	-------	---------------	--	-----------------	------------------------------------	----------

Target Intense low \* Inacc. into choff

Crew observations about Flak:

INTERROGATION FORM

Squadron ~~XXXX~~ 368, ~~XXXXXX~~ A/C Number 384 Lt. F. J. Date 29/11/44

Bomb Load 12 x 500 H.E. Incend.

Position In Formation

Time Tack Off 0919 Time Landed ~~1115~~ 1614

	X	X	X	X	X	
	X	X	X	X	X	40° "B"
	X	X	X	X	X	Lead
	X	X	X	X	X	

1. HOT NEWS to be phoned in? Yes  No

Details:

CREW: Give Rank and Initials

Friendly A/C in any kind of distress:  
(Give position, time, altitude, full details)

NONE

<u>2nd Lt. J.M. Coyne</u>	<input checked="" type="checkbox"/>	Pilot
<u>2nd Lt. R.W. Schreeder</u>	<input checked="" type="checkbox"/>	Co-1
<u>2nd Lt. I. Dorushkin</u>	<input checked="" type="checkbox"/>	Nav
<u>1st Lt. H.L. Hall</u>	<input checked="" type="checkbox"/>	Bomb
<u>T/Sgt. R.K. Decker</u>	<input checked="" type="checkbox"/>	Radio
<u>T/Sgt. Don G. Smith</u>	<input checked="" type="checkbox"/>	Top
<u>S/Sgt. C.A. Brizzi</u>	<input checked="" type="checkbox"/>	Ball
<u>S/Sgt. D.W. Spraggins</u>	<input checked="" type="checkbox"/>	R/W
<u>S/Sgt. B.V. Clement</u>	<input checked="" type="checkbox"/>	Tail

2. TARGET ATTACKED:

P.R.F.  Primary Time: 1301 1/2  
 Alternate Height: 25,000  
 Last Resort Heading: 016°  
 Duration Bomb Run:

ALL

3. Number of ECMBS dropped on target: ALL Jettisoned: Returned: Abortive:

4. Observed RESULTS OF BOMBING: (For this plane or others)

Own Bombs: NONE 10/10

Other Bombing:

Any Nickels: Yes  No   
 Number bombs dropped \_\_\_\_\_  
 Number Bombs returned \_\_\_\_\_

5. Any PHOTOGRAPHS taken: Yes?  No?

6. GROUND TARGETS ATTACKED BY GUNFIRE AND RESULTS:

7. ROUTE: (If different than ordered) (If ABORTIVE give time, place, height of turn; reason for returning early, and Disposition of bombs.)

As briefed

8. WEATHER: (If it affected mission)

9. FLAK: Encountered on way out, at target and on way home.

Time	Place	Height of A/C	Type (light heavy), intense, moderate or slight.	Color of Bursts	Location of Bursts in relation to A/C	Accuracy
1300	Target	25,000	Heavy-Slight	Grey - High Black - low	High	Inaccurate
1435	Coast	23,000	Heavy-Slight	Black	Level	Fairly Accurate

Crew observations about Flak:

Target flak-barrage. Chaff very effective

DECLASSIFIED PER EXECUTIVE ORDER 12356, Section 3.3, 15005  
 By RLB/BAC MABA Date 1/8/94



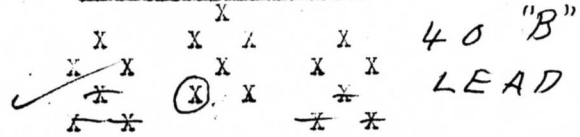
INTERROGATION FORM

SQUADRON ~~XXXXX~~ 368 ~~XXXXXX~~ A/C Number 474 Let r v Date 29/11/44 6

Bomb Load 12 x 500 H.E. Incend.

Position in Formation

Time Took Off 0919 Time Landed \_\_\_\_\_



1. HOT NEWS to be phoned in? Yes No  
Details:

CREW: Give Rank and Initials

Friendly A/C in any kind of distress:  
(Give position, time, altitude, full details)

- 2nd Lt. J.E. Martin  Pilot
- 2nd Lt. W.C. Holder  Co-p
- 2nd Lt. J.M. Wilf  Nav.
- F/O R.C. Urich  Bomb
- T/Sgt. K.W. Kraus  Rec.
- T/Sgt. R.E. Harrington  Top
- S/Sgt. L.B. Davisson  Ball
- S/Sgt. J.L. Bare  R/V
- S/Sgt. J.A. Lawrenz  Tail

2. TARGET ATTACKED:

Primary Time: 1302  
Alternate Height: 25000  
Last Resort Heading: 20 M  
(circle)  
Duration Bomb Run:

3. Number of BOMBS (dropped on target): All Jettisoned: Returned: Abortive:

4. Observed RESULTS OF BOMBING: (For this plane or others)

Own Bombs:

Other Bombing:

Any Nickels: Yes No  
Number bombs dropped \_\_\_\_\_  
Number Bombs returned \_\_\_\_\_

5. Any PHOTOGRAPHS taken: Yes? No?

Took pix.

6. GROUND TARGETS ATTACKED BY GUNFIRE AND RESULTS:

7. ROUTE: (If different than ordered) (If ABORTIVE give time, place, height of turn; reason for returning early, and Disposition of bombs.)

With grp.

8. WEATHER: (If it affected mission) 10/10 over target.

9. FLAK: Encountered on way out, at target and on way home.

Time	Place	Height of A/C	Type (light heavy), intense, moderate or slight.	Color of Bursts	Location Bursts in relation to A/C	Accuracy
	Target		Barrage	Intense	but inacc to left	

Crew observations about Flak: \_\_\_\_\_

DECLASSIFIED PER EXECUTIVE ORDER 12356, Section 3.3, 1.5005  
 BY RLB/BAC NABA Date 1/8/94

INTERROGATION FORM

SQUADRON 367 ~~#####~~ A/C Number 683 Letter Q Date 29/11/44

Bomb Load 12/500 H.E. Incend. Position in Formation

Time Took Off 0919 Time Landed 1612 X X X X (X) 40th B

1. HOT NEWS to be phoned in? Yes No X X X X X X Lead. Details: X X X X

CREW: Give Rank and Initials

Friendly A/C in any kind of distress: (Give position, time, altitude, full details)

- 1st Lt. Breed, R.L. Pilot
2nd Lt. Smith, I.D. Co-P
2nd Lt. Anderson, F.W. Nav.
F/O. Clark, E.R. Bomb
T/Sgt. Grahler, R.W. Radi
T/Sgt. Lothian, G.R. Top
S/Sgt. Tynan, J.C. Ball
S/Sgt. Ursel, R. (NMI) R/W
S/Sgt. Paine, C.E. Tail

2. TARGET ATTACHED:

Primary Time: 1301 1/2
Alternate Height: 25,300
Last Resort Heading: 15 mag
Duration Bomb Run: 255

3. Number of BOMBS dropped on target: Jettisoned: Returned: Abortive:
4. Observed RESULTS OF BOMBING: (For this plane or others)

Own Bombs: PFF
Other Bombing:
Any Nickels: Yes No
Number bombs dropped
Number Bombs returned

5. Any PHOTOGRAPHS taken: Yes? No?

6. GROUND TARGETS ATTACKED BY GUNFIRE AND RESULTS:

7. ROUTE: (If different than ordered) (If ABORTIVE give time, place, height of turn; reason for returning early, and Disposition of bombs.)

as briefed in - Target -

8. WEATHER: (If it affected mission) two layers clouds

9. FLAK: Encountered on way out, at target and on way home.

Table with columns: Time, Place, Height of A/C, Type (light of heavy), intense, moderate or slight, Color of Bursts, Location Bursts in relation to A/C, Accuracy

Coast in + out - on course to one side - few bursts - 4 pm
Target - moderate - fairly accurate - 6 gun batteries -

Crew observations about Flak:

Obs - Bombing -

DECLASSIFIED PER EXECUTIVE ORDER 12356, Section 3.3, 1.5005 BY RLB/BAC NARA Date 1/8/99

DECLASSIFIED PER EXECUTIVE ORDER 12356, Section 3.3, 15005  
 BY RLB/JAC MARA Date 1/8/01

INTERROGATION FORM

SQUADRON 367 ~~#####~~ A/C Number 133 Letter W Date 29/11/44 8

Bomb Load 12/500 H.E. Incend.

Position in Formation

Time Took Off 0919 Time Landed \_\_\_\_\_

		X			
	X	X	X	X	
X	X		X	X	(X) 40 d/B"
X		X	X	X	Lead
X	X			X	X

1. HOT NEWS to be phoned in? Yes No  
 Details:

CREW: Give Rank and Initials

Friendly A/C in any kind of distress:  
 (Give position, time, altitude, full details)

- 2nd Lt. Hodges, S.D. ✓ Pilot
- 2nd Lt. Pawelke, R.F. ✓ Co-p
- F/O Lt. Strand, N. (NMI) ✓ Nav
- S/Sgt. McConaughy, E. N.W. ✓ Bomb
- S/Sgt. Rohinsky, A. (NMI) ✓ Radio
- Sgt. Pacchioni, V. (NMI) ✓ Top
- S/Sgt. Gibson, O. (NMI) ✓ Ball
- S/Sgt. DeZolt, S.P. ✓ R/V
- \_\_\_\_\_ L/V
- S/Sgt. Menzie, F.D. ✓ Tail

2. TARGET ATTACKED:

Primary Time: 1302  
 Alternate Height: 25,780  
 Last Resort Heading: 016  
 (circle)  
 Duration Bomb Run:

3. Number of BOMBS dropped on target: all Jettisoned: Returned: Abortive:

4. Observed RESULTS OF BOMBING: (For this plane or others)

Own Bombs:

Other bombing: on lead

Any Nickels: Yes No  
 Number bombs dropped \_\_\_\_\_  
 Number Bombs returned \_\_\_\_\_

5. Any PHOTOGRAPHS taken: Yes? No?

6. GROUND TARGETS ATTACKED BY GUNFIRE AND RESULTS:

7. ROUTE: (If different than ordered) (If ABORTIVE give time, place, height of turn; reason for returning early, and Disposition of bombs.)

well from 7300 - over target 2 layers.

8. WEATHER: (If it affected mission)

tops - 10-13000 sc.

9. FLAK: Encountered on way out, at target and on way home.

Time	Place	Height of A/C	Type (light heavy), intense, moderate or slight.	Color of Bursts	Location of Bursts in relation to A/C	Accuracy
------	-------	---------------	--	-----------------	---------------------------------------	----------

Zwalle - in + out - out of range - (?)

Target - Meager, low, inaccurate  
 Crew observations about Flak: one hit on A/C

INTERROGATION FORM

SQUADRON 367 ~~#####~~ A/C Number 412 Lt. Ser T Date 29/11/44

Bomb Load 12/500 H.E. Incend.

Position in Formation

Time Took Off 0919 Time Landed 1400

	X	X	X	X	X	X
X	X	X	X	X	X	X
X	X	X	X	X	X	X
X	X			X	X	

40 d'B"  
Lead

1. HOT NEWS to be phoned in? Yes No  
Details:

at 1159 at 5237N 0558E  
as mechanical failure.

CREW: Give Rank and Initials

Friendly A/C in any kind of distress:  
(Give position, time, altitude, full details)

7 formation etc.

- ~~2nd Lt. Hatch, G.L. Pile~~
- ~~2nd Lt. Meissler, W.E. Ce-r~~
- ~~2nd Lt. Skonieczny, E.A. Nav.~~
- ~~S/Sgt. Young, J.K. Bomb~~
- ~~T/Sgt. Search, R.W. Radi~~
- ~~T/Sgt. Regalla, J.S. Top~~
- ~~S/Sgt. Sircy, R.T. Ball~~
- ~~S/Sgt. Bachman, G.W. R/W~~
- ~~L/W~~
- ~~S/Sgt. Mitchell, F.R. Tail~~

2. TARGET ATTACKED:

Primary Time:  
Alternate Height:  
Last Resort Heading:  
(circle)  
Duration Bomb Run:

3. Number of BOMBS dropped on target: Detonated: Returned: Abortive:

4. Observed RESULTS OF BOMBING: (For this plane or others)

North Sea - 5236N 0425E

Own Bombs:

Other Bombing:

Any Nickels: Yes No  
Number bombs dropped \_\_\_\_\_  
Number Bombs returned \_\_\_\_\_

5. any PHOTOGRAPHS taken? Yes? (No?)

6. GROUND TARGETS ATTACKED BY GUNFIRE AND RESULTS:

7. ROUTE: (If different than ordered) (If ABORTIVE give time, place, height of turn; reason for returning early, and Disposition of bombs.)

8. WEATHER: (If it affected mission) Clear

9. FLAK: Encountered on way out, at target and on way home:

Time	Place	Height of A/C	Type (light heavy), intense, moderate or slight.	Color of Bursts	Location of Bursts in relation to A/C	Accuracy
------	-------	---------------	--	-----------------	---------------------------------------	----------

Dutch coast - Meager -

yes

Crew observations about Flak:

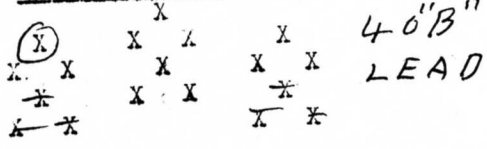
DECLASSIFIED PER EXECUTIVE ORDER 12356, Section 3.3, 15005  
By RLB/BAC MABA Date 1/8/94

SQUADRON ~~368~~ 368 ~~269XXX33X~~ A/C Number 575 Lt. Ser X Date 29/11/44

Bomb Load 12 x 500 H.E. Incend.

Position in Formation

Time Took Off 0919 Time Landed 1610



1. HOT NEWS to be phoned in? Yes (No) Details:

CREW: Give Rank and Initials

Friendly A/C in any kind of distress: (Give position, time, altitude, full details)

NONE

- 2nd Lt. W.A. Ruffin ✓ Pilot
- 2nd Lt. G.B. Howe ✓ Co-  
Nav.
- 2nd Lt. I.B. Holden ✓ Nav.
- 1st Lt. J.E. Brian ✓ Bomb
- T/Sgt. L.E. Edlund ✓ Radi
- T/Sgt. D.E. McCarthy ✓ Top
- S/Sgt. C.B. Culp ✓ Ball
- S/Sgt. R.G. Atwood ✓ R/V
- S/Sgt. P. Brunetti ✓ Tail

2. TARGET ATTACKED:

P.F.F. Primary Time: 1301  
 Alternate Height: 24,800  
 Last Resort Heading: 025°  
 Duration Bomb Run: ✓

3. Number of BOMBS dropped on target: ALL Jettisoned: Returned: Abortive:

4. Observed RESULTS OF BOMBING: (For this plane or others)

Own Bombs: NONE 10/10  
 Other Bombing: \_\_\_\_\_  
 Any Nickels: Yes (No)  
 Number bombs dropped: \_\_\_\_\_  
 Number Bombs returned: \_\_\_\_\_

5. any PHOTOGRAPHS taken: (Yes?) No?

6. GROUND TARGETS ATTACKED BY GUNFIRE AND RESULTS:

7. ROUTE: (If different than ordered) (If ABORTIVE give time, place, height of turn; reason for returning early, and Disposition of bombs.)

As briefed.

8. WEATHER: (If it affected mission) ✓

9. FLAK: Encountered on way out, at target and on way home.

Time	Place	Height of A/C	Type (light heavy), intense, moderate or slight.	Color of Bursts	Location of Bursts in relation to A/C	Accuracy
1300	Target	24,800	Heavy-Moderate	Black	low	Inaccurate.
1410	Zwolle	22,500	Heavy-Slight	Black	low	Inaccurate.

Crew observations about Flak: \_\_\_\_\_

At target mostly barrage type. Slight tracking flak as A/C left target. Chaff very effective.

DECLASSIFIED PER EXECUTIVE ORDER 12356, Section 3.3, BY RLB/JAC NARA Date 1/8/94

5005



DECLASSIFIED PER EXECUTIVE ORDER 12356, Section 3.3, 15005  
 BY RLB/BAC NARA Date 1/8/94

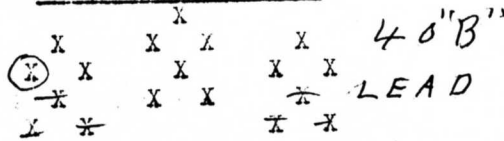
INTERROGATION FORM

SQUADRON ~~XXXX368~~ ~~XXXXXX~~ A/C Number 633 Letter 7 Date 29/11/44

Bomb Load 12 x 500 H.E. Incend.

Position in Formation

Time Took Off 0919 Time Landed \_\_\_\_\_



1. HOT NEWS to be phoned in? Yes No

CREW: Give Rank and Initials

Friendly A/C in any kind of distress:  
(Give position, time, altitude, full details)

- 2nd Lt. M.J. Bruton ✓ File
- 2nd Lt. S.M. Owens ✓ Co-r
- 2nd Lt. C.O. Holt ✓ Nav.
- 2nd Lt. B.R. Schwartz ✓ Bomb
- T/Sgt. R.D. Mills ✓ Rad
- T/Sgt. E.L. Findley ✓ Top
- S/Sgt. Y. Hop ✓ Ball
- S/Sgt. L.F. Pesterfield ✓ R/V
- \_\_\_\_\_ L/V
- S/Sgt. J.J. Fredericks ✓ Tail

2. TARGET ATTACKED:

Primary Time: 1301  
 Alternate Height: 24600  
 Last Resort Heading: 20' mag  
 (circle)  
 Duration Bomb Run:

*off runway*

3. Number of BOMBS dropped on target: all Jettisoned: \_\_\_\_\_ Returned: \_\_\_\_\_ Abortive: \_\_\_\_\_

4. Observed RESULTS OF BOMBING: (For this plane or others)

Own Bombs:

*None returned 10/10 the*

Any Nickels: \_\_\_\_\_ Yes \_\_\_\_\_ No

Number bombs dropped \_\_\_\_\_

Number Bombs returned \_\_\_\_\_

Other Bombing: \_\_\_\_\_

5. Any PHOTOGRAPHS taken: Yes?  No?

6. GROUND TARGETS ATTACKED BY GUNFIRE AND RESULTS:

7. ROUTE: (If different than ordered) (If ABORTIVE give time, place, height of turn; reason for returning early, and Disposition of bombs.)

*with formation ground*

8. WEATHER: (If it affected mission)

*Visual about 1 hr before target. Broken Red reported target 10/10 43, burst at briefed altitude. Route home 10/10 20 for 1 1/2 N target then broken*

Time	Place	Height of A/C	Type (light heavy), intense, moderate or slight.	Color of Bursts	Location Bursts in relation to A/C	Accuracy
------	-------	---------------	--	-----------------	------------------------------------	----------

*Target flak moderate before we arrived - died out before we got there - some tracking - some battery.*

few observations about Flak: *Flak at west, mostly low, 5000 ft*

*2 guns - tracking - not accurate  
 also 7.5 cal, 3 guns, inaccuracy 2000 ft low, on*

SQUADRON ~~XXXXXX~~ 423 A/C Number 397 Letter 0 Date 29 November, 1944

Bomb Load 12 x 500 H.E. ~~XXXXXX~~

Position in Formation

Time Took Off 09:19 Time Landed \_\_\_\_\_

	X	X	X	X
X	X	X	X	X
X	X	X	X	X
X	X		X	X

40th "B"  
Low.

1. HOT NEWS to be phoned in? Yes No

Details:

no -

CREW: Give Rank and Initials

Friendly A/C in any kind of distress:  
(Give position, time, altitude, full details)

- 1st Lt. W. W. Wood ✓ Pilot <sup>2</sup>
- 2nd Lt. W. A. MacDonald ✓ Co-P
- 1st Lt. B. D. Wagner ✓ Nav.
- 1st Lt. H. H. Baker ✓ Bomb
- T/Sgt. J. L. Garrett ✓ Radi
- T/Sgt. E. C. Hovey ✓ Top
- S/Sgt. J. M. Neely ✓ Ball
- S/Sgt. J. C. Ellis ✓ R/W
- S/Sgt. C. R. Wolfhope ✓ L/W
- S/Sgt. D. G. Bloedel ✓ Tail

2. TARGET ATTACKED:

Primary Time: \_\_\_\_\_  
 Alternate Height: \_\_\_\_\_  
 Last Resort Heading: \_\_\_\_\_  
 (circle)  
 Duration bomb Run: \_\_\_\_\_

3. Number of BOMBS dropped on target: all Jettisoned: Returned: Abortive:

4. Observed RESULTS OF BOMBING: (For this plane or others)

Own Bombs:

Any Nickels: Yes \_\_\_ No \_\_\_  
 Number bombs dropped \_\_\_\_\_  
 Number Bombs returned \_\_\_\_\_

Other Bombing:

5. Any PHOTOGRAPHS taken: Yes? No?

6. GROUND TARGETS ATTACKED BY GUNFIRE AND RESULTS:

7. ROUTE: (If different than ordered) (If ALTERNATE give time, place, height of turn; reason for returning early, and Disposition of bombs.)

8. WEATHER: (If it affected mission)

9. FLAK: Encountered on way out, at target and on way home.

Time	Place	Height of A/C	Type (light or heavy), intense or moderate or slight.	Color of Bursts	Location of Bursts in relation to A/C	Accuracy
------	-------	---------------	---	-----------------	---------------------------------------	----------

Target - very near

Crew observations about Flak: \_\_\_\_\_

DECLASSIFIED PER EXECUTIVE ORDER 12356, Section 3.3, 1-5005  
 BY RLB/JAC  
 MARA Date 1/8/94



ADDITIONAL INTERROGATION FORM FOR GROUP AND SQUADRON LEAD AIRCRAFT

(check one)  
GROUP LEADER \_\_\_\_\_  
HIGH SQUADRON LEADER \_\_\_\_\_  
LOW SQUADRON LEADER \_\_\_\_\_  
PLANE WITH OTHER GROUP \_\_\_\_\_  
(Indicate Group and Group Identification)  
SINGLE AIRCRAFT \_\_\_\_\_

1. Time and Place of crossing English Coast 1110 - Felixstow  
1534 12 miles N of Felixstow  
2. Was Course as Briefed? \_\_\_\_\_  
If not, describe course in detail \_\_\_\_\_

3. Time and Place of crossing Enemy Coast 1150 - 5237-0437  
TP - 5145-0956 at 1257 hours - 1435 hours - 5227-0437

4. Time over Target 1302  
Altitude over Target 24,500  
Position of Group on Bomb Run \_\_\_\_\_  
Magnetic Heading of Bomb Run 13 way.  
Duration Bomb Run Turn off to 360

*Believed was to avoid collision course w. another group.*

5. Time of Landing at Base \_\_\_\_\_  
If landed away from base before return state where and why \_\_\_\_\_  
\_\_\_\_\_  
\_\_\_\_\_  
\_\_\_\_\_

DATE \_\_\_\_\_ TIME \_\_\_\_\_ Sq2 OFFICER Pool

DECLASSIFIED PER EXECUTIVE ORDER 12356, Section 3.3, 745005  
BY RLB/BAC NARA Date 1/8/94

INTERROGATION FORM

14

SQUADRON ~~XXXXXXXXXX~~ 423 A/C Number 019 Letter T Date 29 November, 1944

Bomb Load 12 x 500 H.E. ~~XXXXX~~ Position in Formation

Time Took Off 09:19 Time Landed 1700

	X	X	X	X	X	404 B
X	X	X	X	X	X	
X	X	X	X	X	X	Low
X	X			X	X	

1. HOT NEWS to be phoned in? Yes  No

CREW: Give Rank and Initials

Friendly A/C in any kind of distress: (Give position, time, altitude, full details)

- 2nd Lt. F. J. Stewart Pilot ✓
- 2nd Lt. B. B. Merrill Co-P ✓
- F/O. E. S. Smolenski Nav. ✓
- 2nd Lt. A. G. Dealy Bomb ✓
- S/Sgt. J. R. Hathaway Radi ✓
- T/Sgt. D. D. Erwin Top ✓
- S/Sgt. E. C. Herold Ball ✓
- S/Sgt. M. B. Westmoreland R/W ✓
- L/W ✓
- S/Sgt. J. A. Cooner Tail ✓

2. TARGET ATTACKED:

Primary Time: 1302 hr  
 Alternate Height: 24,500  
 Last Resort Heading: 010° M  
 (circle)  
 Duration bomb Run:

3. Number of BOMBS dropped on target: ALL Jettisoned: Returned: Abortive:  
 4. Observed RESULTS OF BOMBING: (For this plane or others)

*Chaff ok*

Own Bombs: SALVO  
 Other bombing:  
 Any Nickels: Yes  No  
 Number bombs dropped \_\_\_\_\_  
 Number Bombs returned \_\_\_\_\_

5. Any PHOTOGRAPHS taken: Yes?  No?  
 6. GROUND TARGETS ATTACKED BY GUNFIRE AND RESULTS:  
 7. ROUTE: (If different than ordered) (If ALORIVE give time, place, height of turn; reason for returning early, and Disposition of bombs.)

*SE before target*

8. WEATHER: (If it affected mission) *1700 - overcast*  
 9. FLAK: Encountered on way out, at target and on way home.

Time	Place	Height of A/C	Type (light heavy), intense, moderate or slight.	Color of Bursts	Location of Bursts in relation to A/C	Accuracy
	Target -					no
	<i>1/2 mi So of come out 2nd flak.</i>					
Crew observations about Flak: _____						

DECLASSIFIED PER EXECUTIVE ORDER 12356, Section 3.3, 15005  
 BY RLB/BAC  
 MABA Date 1/18/94

SQUADRON ~~267XX060000~~ 423 A/C Number 155 Letter EV Date 29 November, 1944

Bomb Load 12 x 500 H.E. ~~incendiary~~

Position in Formation

Time Took Off 09:19 Time Landed 1700

	X	X	X	X	
X	X	X	X	X	
X	X	X	X	X	
X	X	X	X	X	

40th "B" ✓  
Low.

1. HOT NEWS to be phoned in? Yes No  
Details:

CRW.: Give Rank and Initials

Friendly A/C in any kind of distress:  
(Give position, time, altitude, full details)

2nd Lt. W. (NMI) Borges	✓	Pilot
2nd Lt. K. D. Blackshaw	✓	Co-P
F/O. S. (NMI) Goncher	✓	Nav.
1st Lt. S. C. Jordan	✓	Bomb
T/Sgt. R. A. Hill	✓	Radi
T/Sgt. W. H. Butschek	✓	Top
S/Sgt. P. H. Wehunt	✓	Ball
S/Sgt. E. (NMI) Richardson	✓	R/W
_____	✓	L/W
S/Sgt. W. H. Lynch, Jr.	✓	Tail

2. TARGET ATTACHED:

Primary Time: 1301 1/2  
 Alternate Height: 2 x 800  
 Last Resort Heading: 021° M  
 (circle)  
 Duration Bomb Run:  
 T.O. 356° M

3. Number of BOMBS dropped on target: del Jettisoned: Returned: Abortive:

4. Observed RESULTS OF BOMBING: (For this plane or others)

Own Bombs:

Other bombing:

Any Nickels: Yes No  
 Number bombs dropped 2  
 Number Bombs returned \_\_\_\_\_

5. Any PHOTOGRAPHS taken: Yes No?

6. GROUND TARGETS ATTACKED BY GUNFIRE AND RESULTS: del

7. ROUTE: (If different than ordered) (If ABORTIVE give time, place, height of turn; reason for returning early, and Disposition of bombs.)

8. WEATHER: (If it affected mission)

9. FLAK: Encountered on way out, at target and on way home.

Time	Place	Height of A/C	Type (light heavy), intense, moderate or slight.	Color of Bursts	Location Bursts in relation to A/C	Accuracy

Crew observations about Flak: \_\_\_\_\_

DECLASSIFIED PER EXECUTIVE ORDER 12356, Section 3.3, 15005  
 BY RLB/BAC MABA Date 1/8/94

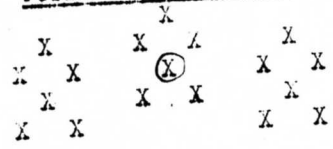
DECLASSIFIED PER EXECUTIVE ORDER 12356, Section 3.3, 15005  
 By RLB/BAC MABA Date 1/8/94

INTERROGATION Form

SQUADRON ~~XXXXXX~~ 423 A/C Number 467 Letter z Date 29 November, 1944

Bomb Load 12 x 500 H.E. ~~XXXXXX~~

Position in Formation



40 x "B" ✓  
Low.

1. HOT NEWS to be phoned in? Yes No  
Details:

CREW: Give Rank and Initials

Friendly A/C in any kind of distress:  
(Give position, time, altitude, full details)

- 2nd Lt. C. P. Smythe  Pilot
- 2nd Lt. S. J. Magusiak  Co-P
- 2nd Lt. D. O. Howe  Nav.
- F/O. D. H. Gorrell  Bomb
- T/Sgt. H. C. West  Radi
- T/Sgt. J. J. Cathey  Top
- S/Sgt. G. B. Franklin  Ball
- S/Sgt. T. E. Kimsey  R/W
- L/W
- S/Sgt. W. W. Prismann  Tail

2. TARGET ATTACHED:

Primary Time: 1301 1/2  
 Alternate Height: 24500  
 Last Resort Heading: 018°M  
 (circle)  
 Duration Bomb Run:  
 T.O. 008° 2300°M

3. Number of BOMBS dropped/on target: Jettisoned: Returned: Abortive:  
 4. Observed RESULTS OF BOMBING: (For this plane or others)

Own Bombs:

Any Nickels: Yes  No   
 Number bombs dropped \_\_\_\_\_  
 Number Bombs returned \_\_\_\_\_

Other Bombing:

5. ANY PHOTOGRAPHS taken: Yes? No?

Ball target ok - 1 reel -

6. GROUND TARGETS ATTACKED BY GUNFIRE AND RESULTS:

7. ROUTE: (If different than ordered) (If ABORTIVE give time, place, height of turn; reason for returning early, and Disposition of bombs.)

8. WEATHER: (If it affected mission)

9. FLAK: Encountered on way out, at target and on way home.

Time	Place	Height of A/C	Type (light heavy), intense, moderate or slight.	Color of Bursts	Location Bursts in relation to A/C	Accuracy

Crew observations about Flak: \_\_\_\_\_

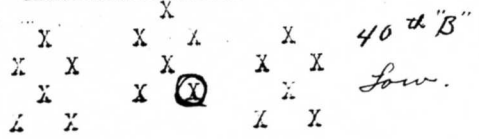
INTERROGATION FORM

SQUADRON ~~XXXXXXX~~ 423 A/C Number 153 Leader G Date 29 November, 1944

Bomb Load 12 x 500 H.L. ~~XXXXXX~~

Position in Formation

Time Took Off 09:19 Time Landed 1700



1. HOT NEWS to be phoned in? Yes No  
Details:

CREW: Give rank and initials

Friendly A/C in any kind of distress:  
(Give position, time, altitude, full details)

- 1st Lt. H. (NMI) Brown ✓ Pilot
- 2nd Lt. D. W. Phillips ✓ Co-1
- 2nd Lt. W. A. Guilfoyle ✓ Nav
- 2nd Lt. L. (NMI) Berry ✓ Bomb
- T/Sgt. C. A. Fatica ✓ Rad
- T/Sgt. T. (NMI) Thomas ✓ Top
- S/Sgt. M. C. Barker ✓ Ball
- S/Sgt. R. H. Beck ✓ R/W
- \_\_\_\_\_ ✓ L/W
- S/Sgt. R. T. Miller, Jr. ✓ Tail

2. TARGET ATTACKED:

Primary Time: 1302  
 Alternate Height: 24,700  
 Last Resort Heading: 30° M  
 (circle)  
 Duration Bomb Run: 360° M

3. Number of BOMBS dropped on target: Jettisoned: Returned: Abortive:

4. Observed RESULTS OF BOMBING: (For this plane or others)

Own Bombs:

Any Nickels: Yes  No   
 Number bombs dropped \_\_\_\_\_  
 Number Bombs returned \_\_\_\_\_

Other bombing:

5. Any PHOTOGRAPHS taken: Yes?  No?

6. GROUND TARGETS ATTACKED BY GUNFIRE AND RESULTS:

7. ROUTE: (If different than ordered) (If ABORTIVE give time, place, height of turn; reason for returning early, and Disposition of bombs.)

*With group*

8. WEATHER: (If it affected mission) *Broken over Holland 0718° E*

9. FLAK: Encountered on way out, at target and on way home.

Time	Place	Height of A/C	Type (light heavy, intense, moderate or slight)	Color of Bursts	Location Bursts in relation to A/C	Accuracy
------	-------	---------------	---	-----------------	------------------------------------	----------

						<i>3 sec. to min</i>
						<i>fairly accurate</i>

Crew observations about Flak:

*This group not in it.*

DECLASSIFIED PER EXECUTIVE ORDER 12356, Section 3.3, 115005  
 BY RLB/JAC  
 MABA Date 1/8/91

SQUADRON ~~XXXXXX~~ 423 A/C Number 674 Letter B Date 29 November, 1944

Bomb Load 12 x 500 H.E. ~~XXXXXX~~

Position in Formation

Time Took Off 09:19 Time Landed \_\_\_\_\_

	X	X	X	X	
X	X	X	X	X	
X	X	(X)	X	X	
X	X		X	X	

40 'B'  
Low

1. HOT NEWS to be phoned in? Yes No  
Details:

CREW: Give Rank and Initials

Friendly A/C in any kind of distress:  
(Give position, time, altitude, full details)

- 2nd Lt. H. G. Roth Pilot ✓
- 2nd Lt. W. M. Stetler Co-p ✓
- F/O S. J. Culbert, Jr. Nav. ✓
- F/O R. C. Garberich Bomb ✓
- T/Sgt. R. M. Coleman Radi ✓
- T/Sgt. H. L. Schammon Top ✓
- S/Sgt. H. H. Henson Ball ✓
- S/Sgt. E. L. Finch R/W ✓
- \_\_\_\_\_ L/W
- S/Sgt. E. F. Linke Tail ✓

2. TARGET ATTACHED:

Primary Time: 1301  
 Alternate Height: \_\_\_\_\_  
 Last resort Heading: \_\_\_\_\_  
 (circle)  
 Duration Bomb Run: with lead

3. Number of BOMBS dropped on target: Jettisoned: Returned: Abortive:

4. Observed RESULTS OF BOMBING: (For this plane or others)

Own Bombs:

Any Nickels: Yes No  
 Number bombs dropped \_\_\_\_\_  
 Number Bombs returned \_\_\_\_\_

Other Bombing:

5. any PHOTOGRAPHS taken: Yes? No?

6. GROUND TARGETS ATTACKED BY GUNFIRE AND RESULTS:

7. ROUTE: (If different than ordered) (If ABORTIVE give time, place, height of turn; reason for returning early, and Disposition of bombs.)

8. WEATHER: (If it affected mission) \_\_\_\_\_

9. FLAK: Encountered on way out, at target and on way home.

Time	Place	Height of A/C	Type (light or heavy), intense, moderate or slight.	Color of Bursts	Location Bursts in relation to A/C	Accuracy
------	-------	---------------	---	-----------------	------------------------------------	----------

Mod, inacc, track - target -

Crew observations about Flak: Coast in out - -

DECLASSIFIED PER EXECUTIVE ORDER 12356, Section 3.3, 15005  
By RLB/BAC NARA Date 1/18/94

INTERROGATION FORM

SQUADRON 367 ~~367~~ A/C Number 611 Lt. r G Date 29/11/44

Bomb Load 12/500 H.E. Incend.

Position in Formation

Time Took Off 0919 Time Landed 1605

	X	X	X	X	40 & B
X	X	X	X	X	
X		X	X	X	Low
X	X			X	X

1. HOT NEWS to be phoned in? Yes  No

CREW: Give Rank and Initials

Friendly A/C in any kind of distress:  
(Give position, time, altitude, full details)

NONE

- 2nd Lt. Sutherland, E.B.  Pil.
- 2nd Lt. Fields, J.K.  Co-~~r~~
- F/O. Allen, R.R.  Nav.
- 1st Lt. Todd, E.L.  Bomb
- T/Sgt. Geving, M.R.  Radi
- T/Sgt. Maddock, G.M.  Top
- S/Sgt. Sanders, W.H.  Bail
- S/Sgt. Vicknair, G.A.  R/W
- L/W
- S/Sgt. Starbuck, W.C.  Tail

2. TARGET ATTACKED:

P.F.F.  Primary Time: 1301 <sup>1</sup>/<sub>2</sub>  
 Alternate Height: 24,800  
 Last Resort Heading: 023°  
 Duration Bomb Run:

3. Number of BOMBS dropped on target: ALL Jettisoned: Returned: Abortive:

4. Observed RESULTS OF BOMBING: (For this plane or others)

Own Bombs: NONE 10/10

Any Nickels: Yes  No  
 Number bombs dropped \_\_\_\_\_  
 Number Bombs returned \_\_\_\_\_

5. Any PHOTOGRAPHS taken:  Yes?  No?

6. GROUND TARGETS ATTACKED BY GUNFIRE AND RESULTS:

7. ROUTE: (If different than ordered) (If ABORTIVE give time, place, height of turn; reason for returning early, and Disposition of bombs.)

As briefed.

8. WEATHER: (If it affected mission) Cumulus + Status below:

9. FLAK: Encountered on way out, at target and on way home.

Time	Place	Height of A/C	Type (light heavy), intense, moderate or slight.	Color of Bursts	Location Bursts in relation to A/C	Accuracy
1300	Target	25000	Heavy-Moderate	Grey-Black	Black - low	Inaccurate
1435	Coast	22,600	Heavy-Slight	Black	Level	Accurate
1409	Zwolle	22,600	Heavy-Slight	Black	left	Inaccurate

Crew observations about Flak:

Chat very effective.

DECLASSIFIED PER EXECUTIVE ORDER 12356, Section 3.3, 1-5005  
 By RIB/BAC NARA Date 1/8/94

DECLASSIFIED PER EXECUTIVE ORDER 12356, Section 3.3, 1-5005  
 By RLB/BAC MARA Date 1/8/91

INTERROGATION FORM

SQUADRON 367 #~~00000~~ #~~00000~~ A/C Number 063 Letter A Date 29/11/44  
 Bomb Load 12/500 H.E. Incend. Position in Formation  
 Time Took Off 0919 Time Landed 1658

			X	
X	X	X	X	X
X	X	X	X	X
X	X	X	X	X

40th "B"  
Low ✓

1. HOT NEWS to be phoned in? Yes No  
 Details:

CREW.: Give Rank and Initials

Friendly A/C in any kind of distress:  
 (Give position, time, altitude, full details)

- 2nd Lt. Davis, J.L.  Pil.
- 2nd Lt. Lenn, D.R.  Co-1 ✓
- 2nd Lt. Hursthouse, M.S.  Nav.
- Sgt. Dunn, J.L.  Bomb
- T/Sgt. Groover, R.H.  Rep.
- T/Sgt. Owens, C.H.  Top
- S/Sgt. Workman, E. (NMI)  Ball
- S/Sgt. Russell, W.F.  R/W
- S/Sgt. Gillespie, W.T.  Tail

2. TARGET ATTACKED:

Primary Time: 1303  
 Alternate Height: 2 x 500  
 Last Resort Heading: 025°M  
 (circle)  
 Duration Bomb Run:

3. Number of BOMBS dropped on target: Jettisoned: Returned: Abortive:  
*Saved delay about 30 sec.*

4. Observed RESULTS OF BOMBING: (For this plane or others)

Own Bombs: Any Nickels: Yes  No   
 Number bombs dropped: \_\_\_\_\_  
 Number Bombs returned: \_\_\_\_\_

5. Any PHOTOGRAPHS taken: Yes?  No?

6. GROUND TARGETS ATTACKED BY GUNFIRE AND RESULTS:

7. ROUTE: (If different than ordered) (If ABORTIVE give time, place, height of turn; reason for returning early, and Disposition of bombs.)

8. WEATHER: (If it affected mission)

9. FLAK: Encountered on way out, at target and on way home.

Time	Place	Height of A/C	Type (light heavy), intense, moderate or slight.	Color of Bursts	Location Bursts in relation to A/C	Accuracy
------	-------	---------------	--	-----------------	------------------------------------	----------

Grenade - HV Meagre - Low - Accurate  
 Grenade - HV - Low - Accurate  
 Target - HV <sup>mod</sup> - BLK + white - Low - Inaccurate  
 Crew observations about Flak:  
 Zivalls (out) - HV Meagre - BLK (visual) - Accurate  
 Grenade - HV Meagre - BLK (visual) - Accurate



DECLASSIFIED PER EXECUTIVE ORDER 12356, Section 3.3, 1-5005  
 BY RLB/BAC NARA Date 1/8/94

INTERROGATION FORM

21

SQUADRON 367 ##### A/C Number 849 Lt. r. y Date 29/11/44

Bomb Load 12/500 H.E. Incend.

Position in Formation

Time Took Off 0919 Time Landed

			X					
	X	X	X	X	X	X	X	40 <sup>th</sup> B
	X	X	X	(X)	X	X	X	low.
	X	X	X	X	X	X	X	

1. HOT NEWS to be phoned in? Yes No  
 Details:

CRE.: Give Rank and Initials

Friendly A/C in any kind of distress:  
 (Give position, time, altitude, full details)

2nd Lt. Overstreet, R.B.	✓	Pile
2nd Lt. Shepard, F.K.	✓	Co.
2nd Lt. Fortman, F.J.	✓	Nav
T/Sgt., Coleman, J. (NMT)	✓	Bomb
S/Sgt. Bearden, W.B.	✓	R.
S/Sgt. Davis, S.J.	✓	Top
S/Sgt. Petrillo, G.W.	✓	Ball
S/Sgt. Dempsey, M.J.	✓	R/V
S/Sgt. Richards, L.R.	✓	L/V
		Tail

2. TARGET ATTACKED:

Primary Time: 1302  
 Alternate Height: 24,400  
 Last Resort Heading: 010  
 (circle)  
 Duration Bomb Run:

3. Number of BOMBS dropped on target: Jettisoned: Returned: Abortive:

4. Observed RESULTS OF BOMBING: (For this plane or others)

Own Bombs:

Any Nickels: Yes No  
 Number bombs dropped  
 Number Bombs returned

Other Bombing:

5. any PHOTOGRAPHS taken: Yes? No?

6. GROUND TARGETS ATTACKED BY GUNFIRE AND RESULTS:

7. ROUTE: (If different than ordered) (If ABORTIVE give time, place, height of turn; reason for returning early, and Disposition of bombs.)

J-5230 - clouds around 1/10

8. WEATHER: (If it affected mission)

10/10 target

9. FLAK: Encountered on way out, at target and on way home.

Time	Place	Height of A/C	Type (light heavy), intense, moderate or slight.	Color of Bursts	Location of Bursts in relation to A/C	Accuracy
	Swallow		observed		2500	
	meager, inacc, barage				Target	
	Down light compared to last Sunday					
	Crew observations about Flak:					

Ostrebick - also

DECLASSIFIED PER EXECUTIVE ORDER 12356, Section 3.3, 15005  
 By RLB/BAC  
 Date 1/8/91  
 MABA

INTERROGATION FORM

SQUADRON ~~20000000~~ 369 418 A/C Number 418 Letter FJ Date 29 November, 1944 22

Bomb Load 12 x 500 H.E. ~~1000000~~

Time Took Off 09:19 Time Landed \_\_\_\_\_

Position in Formation

	X	X	X	X	X	40 ft "B"
(X)	X	X	X	X	X	
X	X	X	X	X	X	Low.
X	X	X	X	X	X	

1. HOT NEWS to be phoned in? Yes No  
 Details:

*2 P515 together at 1205  
 just jacked coast - No contacts  
 observed - Top pr.*

CREW: Give Rank and Initials

Friendly A/C in any kind of distress:  
 (Give position, time, altitude, full details)

- 2nd Lt. P. J. Reiloux  Pilot
- 2nd Lt. R. W. Daniel  Co-P
- 2nd Lt. J. C. Talley  Nav.
- 2nd Lt. M. J. Olshewitz  Bomb
- T/Sgt. H. H. Kaye  Radi
- T/Sgt. J. E. Price  Top
- S/Sgt. L. J. Persac, Jr.  Ball
- S/Sgt. C. W. Sheorn  R/W
- S/Sgt. J. W. Perry  L/W
- Tail

2. TARGET ATTACHED:

Primary Time: 1502  
 Alternate Height: 24,000  
 Last resort Heading: 020 mag  
 (circle)  
 Duration Bomb Run:  
PPA

3. Number of BOMBS dropped on target: all Settled: Returned: abortive:

4. Observed RESULTS OF BOMBING: (For this plane or others)

Own Bombs: Not observed - 10/10 lbs

Other Bombing: \_\_\_\_\_  
 Any Nickels: Yes \_\_\_ No \_\_\_  
 Number bombs dropped \_\_\_\_\_  
 Number Bombs returned \_\_\_\_\_

5. Any PHOTOGRAPHS taken: Yes?  No?

6. GROUND TARGETS ATTACKED BY GUNFIRE AND RESULTS:

7. ROUTE: (If different than ordered) (If ALTERNATE give time, place, height of turn; reason for returning early, and Disposition of bombs.)  
with formation

8. WEATHER: (If it affected mission)

9. FLAK: Encountered on way out, at target and on way home.

Time	Place	Height of A/C	Type (light heavy), intense, moderate or slight.	Color of Bursts	Location Bursts in relation to A/C	Accuracy
------	-------	---------------	--	-----------------	------------------------------------	----------

meagre, inaccurate at target

Crew observations about Flak: Flak at Coast - and out  
brief route - accurate meagre (10 bursts)

DECLASSIFIED PER EXECUTIVE ORDER 12356, Section 3.3, 1-5005  
 BY RLB/BAC MABA Date 1/18/91

INTERROGATION FORM

SQUADRON 167XX068A 423 A/C Number 963 Letter P Date 29 November, 19

Bomb Load 12 x 500 H.E. XXXXXX

Position in Formation

Time Took Off 09:19 Time Landed \_\_\_\_\_

		X				
	X	X	X	X	X	
X	(X)	X	X	X	X	
X	X	X	X	X	X	
X	X			X	X	

*40th "B" Low.*

1. HOT NEWS to be phoned in? Yes No  
 Details: \_\_\_\_\_

CREW: Give Rank and Initials

Friendly A/C in any kind of distress:  
 (Give position, time, altitude, full details)

- 2nd Lt. E. J. Lindsay Pilot ✓
- 2nd Lt. M. L. Mullen Co-ort ✓
- 2nd Lt. W. W. Gunkel Nav. ✓
- 2nd Lt. P. E. German Bomb ✓
- T/Sgt. J. M. Cullen Rec-ord ✓
- S/Sgt. R. D. Jarvis Top ✓
- S/Sgt. R. H. Schuettpelz Ball ✓
- S/Sgt. E. D. Craig E/W ✓
- \_\_\_\_\_ L/W
- S/Sgt. L. L. Bagwell Tail ✓

2. TARGET ATTACKED:

Primary Time: 1302  
 Alternate Height: 24400  
 Last Resort Heading: 25 mag  
 (circle)  
 Duration Bomb Run: \_\_\_\_\_

3. Number of BOMBS dropped on target: Jettisoned: Returned: abortive:

4. Observed RESULTS OF BOMBING: (For this plane or others)

Down Bombs: \_\_\_\_\_

Any Nickels: Yes No  
 Number bombs dropped \_\_\_\_\_  
 Number Bombs returned \_\_\_\_\_

Other bombing: \_\_\_\_\_

5. Any PHOTOGRAPHS taken: Yes? No?

6. GROUND TARGETS ATTACKED BY GUNFIRE AND RESULTS:

7. ROUTE: (If different than ordered) (If ABORTIVE give time, place, height of turn; reason for returning early, and Disposition of bombs.)

8. WEATHER: (If it affected mission) 10/10

9. FLAK: Encountered on way out, at target and on way home.

Time	Place	Height of A/C	Type (light heavy), intense, moderate or slight.	Color of Bursts.	Location Bursts in relation to A/C	Accuracy
------	-------	---------------	--	------------------	------------------------------------	----------

misses, not acc - Target

Crew observations about Flak: \_\_\_\_\_

Coast out - little v. (4-5 mi) got flak.

DECLASSIFIED PER EXECUTIVE ORDER 12356, Section 3.3, 115005  
 By RLB/BAC MABA Date 1/8/94

INTERROGATION FORM

24

SQUADRON ~~867000000000~~ 423 A/C Number 616 Letter B X Date 29 November, 1944

Bomb Load 12 x 500 H.E. ~~XXXXXX~~

Position in Formation

Time Took Off 09:19 Time Landed 1641

	X	X	X	X
<input checked="" type="checkbox"/>	X	X	X	X
	X	X	X	X
	X	X	X	X

40° a "B"  
Low.

1. HOT NEWS to be phoned in? Yes No  
Details:

CREW.: Give Rank and Initials

Friendly A/C in any kind of distress:  
(Give position, time, altitude, full details)

Capt. N. G. Kirby	Pilot
2nd Lt. D. C. Paialey	Co-P.
F/O. G. H. Blahnik	Nav.
2nd Lt. L. F. Finnell	Bomb
Sgt. R. E. Burkhardt	Radio
S/Sgt. H. A. Kelso	Top
Sgt. J. S. Adams	Ball
S/Sgt. J. L. Harper, Jr.	R/W
	L/W
sgt. S. R. Counts, Jr.	Tail

2. TARGET ATTACHED:

Primary Time: 13 02 14  
 Alternate Height: 24,300  
 Last Resort Heading: 005° M.  
 Duration Bomb Run:

3. Number of BOMBS dropped on target: Jettisoned: Returned: abortive:

4. Observed RESULTS OF BOMBING: (For this plane or others)

Own Bombs: 10700

any Nickels: Yes (No)  
 Number bombs dropped \_\_\_\_\_  
 Number Bombs returned \_\_\_\_\_

Other bombing:

5. any PHOTOGRAPHS taken: (Yes) No?

6. GROUND TARGETS ATTACKED BY GUNFLIGHT AND RESULTS:

7. ROUTE: (If different than ordered) (If ABORTIVE give time, place, height of turn; reason for returning early, and Disposition of bombs.)

coast out 5 mi S. of coast.

8. WEATHER: (If it affected mission) 10700 - no clouds.

9. FLAK: Encountered on way out, at target and on way home.

Time	Place	Height of A/C	Type (light heavy), intense, moderate or slight.	Color of Bursts	Location Bursts in relation to A/C	Accuracy
------	-------	---------------	--	-----------------	------------------------------------	----------

Spoke bombs

Coast out -

Crew observations about Flak: \_\_\_\_\_

Chaff  
ole

INTERROGATION FORM

25

SQUADRON ~~XXXXXXX~~ 569 ~~XXXX~~ A/C Number 557 Letter Y Date 29/11/44

Bomb Load 12 x 500 H.E. Incend.

Position in Formation

Time Took Off 0919 Time Landed

	X	X	X	X	
X	X	X	X	X	X
X	X	X	X	X	X
X	X	X	X	X	X

40 "B"  
HIGH

1. HOT NEWS to be phoned in? Yes No  
Details:

no

CREW: Give Rank and Initials

Friendly A/C in any kind of distress:  
(Give position, time, altitude, full details)

- 1st Lt. H.L. Laughlin Pilot ✓
- 2nd Lt. W.L. Rogers Co-P ✓
- 2nd Lt. C.F. Bush Nav. ✓
- 2nd Lt. B.S. Gailey Bomb ✓
- T/Sgt. W.L. Hickman Radi ✓
- T/Sgt. J.A. Homesley Top ✓
- S/Sgt. C.K. Ukele Ball ✓
- S/Sgt. J.A. Mathews R/W ✓
- L/W ✓
- S/Sgt. V.N. Keuer Tail ✓

2. TARGET ATTACHED:

Primary Time: 1302

Alternate Height: 25,700

Last Resort Heading: 20 mag.

(circle)  
Duration bomb Run:

3. Number of BOMBS dropped on target: alt Jettisoned: Returned: abortive:

4. Observed RESULTS OF BOMBING: (For this plane or others)

Own Bombs: Dropped on our lead in Group formation.

Any Nickels: Yes No  
Number bombs dropped  
Number Bombs returned

Other Bombing:

5. any PHOTOGRAPHS taken: Yes? No?

6. GROUND TARGETS ATTACKED BY GUNFIRE AND RESULTS:

7. ROUTE: (If different than ordered) (If ALORIVE give time, place, height of turn; reason for returning early, and Disposition of bombs.)

8. WEATHER: (If it affected mission)

9. FLAK: Encountered on way out, at target and on way home.

Time	Place	Height of A/C	Type (light heavy), intense, moderate or slight.	Color of Bursts	Location of Bursts in relation to A/C	Accuracy

Grew observations about Flak:

DECLASSIFIED PER EXECUTIVE ORDER 12356, Section 3.3, 15005  
By RLB/BAC  
Date 1/8/94  
NARA

Bomb Load 12 x 500 H.E. Incend.

Position in Formation

		X		
X	X	X	X	X
X	X	X	X	X
X	X	X	X	X

40 B  
High

1. HOT NEWS to be phoned in? Yes  No  
 Details:

CRE.: Give Rank and Initials

Friendly A/C in any kind of distress:  
 (Give position, time, altitude, full details)

1st Lt. W.M. Doman	Pil.
2nd Lt. R.M. Wood	Co-r
2nd Lt. J.J. Fitzsimmons	Nav.
2nd Lt. W.M. Lanus	Bank
S/Sgt. J.E. Thwaite	Radi
T/Sgt. G.C. Barron	Completely Topdown
S/Sgt. E.P. Richards	Ball
S/Sgt. B. Parker	R/W
	L/W
S/Sgt. S. Stojkov	Tail

2. TARGET ATTACKED:

Primary Time: 1301-40  
 Alternate Height: 25,250  
 Last Resort Heading: 0180M.  
 (circle)  
 Duration Bomb Run:

3. Number of BOMBS dropped on target: 17 Jettisoned: Returned: Abortive:

4. Observed RESULTS OF BOMBING: (For this plane or others)

Chaff etc

Own Bombs:

Any Nickels: Yes  No  
 Number bombs dropped \_\_\_\_\_  
 Number Bombs returned \_\_\_\_\_

5. Any PHOTOGRAPHS taken: Yes?  No?

6. GROUND TARGETS ATTACKED BY GUNFIRE AND RESULTS:

7. ROUTE: (If different than ordered) (If ABORTIVE give time, place, height of turn; reason for returning early, and Disposition of bombs.)

So of course before target.

8. WEATHER: (If it affected mission) 1900 tops 18,000 - light  
 9. FLAK: Encountered on way out, at target and on way home. Non-per. Contr.

Time	Place	Height of A/C	Type (light heavy), intense, moderate or slight.	Color of Bursts	Location Bursts in relation to A/C	Accuracy
------	-------	---------------	--	-----------------	------------------------------------	----------

(on course)

Out - Dutch coast - meager - yes  
 could see guns on beach.

Zwolle - on way in; few out.

Crew observations about Flak:

DECLASSIFIED PER EXECUTIVE ORDER 12356, Section 3.3, 15005  
 By RIB/JAC NARA Date 1/8/91



DECLASSIFIED PER EXECUTIVE ORDER 12356, Section 3.3, 15005  
 BY RIB/BAC NARA Date 1/8/91

INTERROGATION FORM

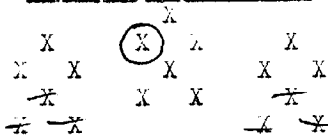
27

SQUADRON ~~XXXXXX~~ 369 ~~XXXX~~ A/C Number 301 Letter U Date 29/11/44

Bomb Load 12 x 500 H.E. Incend.

Position in Formation

Time Took Off 0919 Time Landed \_\_\_\_\_



40 "B"  
HIGH

1. HOT NEWS to be phoned in? Yes No

Details:

CREW: Give Rank and Initials

Friendly A/C in any kind of distress:  
(Give position, time, altitude, full details)

- Capt. J.L. Murphy Pilot
- 2nd Lt. W.W. Clark Co-P
- 2nd Lt. G.J. Lateano Nav.
- 2nd Lt. G.T. Kerr, Jr. Bomb
- T/Sgt. L.W. Jagnow Radi
- T/Sgt. A.R. Cecere Top
- S/Sgt. W.J. McCue Ball
- S/Sgt. D.F. Bohrer R/W
- T/Sgt. L.J. Peterson Tail

2. TARGET ATTACHED:

Primary Time: 1301  
 Alternate Height: 25500  
 Last Resort Heading: 021°  
 (circle)  
 Duration bomb Run:

3. Number of BOMBS dropped on target all Jettisoned: Returned: Abortive:

4. Observed REMARKS OF BOMBING: (For this plane or others)

Own Bombs: With Group  
PF

Any Nickels: Yes No  
 Number bombs dropped \_\_\_\_\_  
 Number Bombs returned \_\_\_\_\_

5. Any PHOTOGRAPHS taken: Yes? No?

6. GROUND TARGETS ATTACKED BY GUNFIRE AND RESULTS:

7. ROUTE: (If different than ordered) (If ALORIVE give time, place, height of turn; reason for returning early, and Disposition of bombs.)

With Group

8. WEATHER: (If it affected mission)

9. FLAK: Encountered on way out, at target and on way home.

Time	Place	Height of A/C	Type (light or heavy), intense or moderate or slight.	Color of Bursts	Location of Bursts in relation to A/C	Accuracy
------	-------	---------------	---	-----------------	---------------------------------------	----------

Target - moderate to intense - low, - brown  
5235-0435 (pilots) - meager - accurate coming out, but not going in.

Crew observations about Flak: \_\_\_\_\_



DECLASSIFIED PER EXECUTIVE ORDER 12356, Section 3.3, 11-5005  
 BY RLB/BAC  
 MARA Date 1/8/94

INTERROGATION FORM

SQUADRON ~~XXXXXXXX~~369 ~~XXXXX~~ A/C Number 287 Letter V Date 29/11/44

Bomb Load 12 x 500 H.E. Incend.

Position in Formation

Time Take Off 0919 Time Landed \_\_\_\_\_

		X	X	X	X	X	X	X	X
X	X	X	X	X	X	X	X	X	X
X	X	X	X	X	X	X	X	X	X

40" B"  
HIGH

1. HOT NEWS to be phoned in? Yes No  
 Details:

TB 1135 hr. 5226 0345  
 Oil leak in prop gov. #3 eng. Did not feather.

CREW: Give Rank and Initials

Friendly A/C in any kind of distress:  
 (Give position, time, altitude, full details)

Good form.

<u>2nd Lt. J.L. Cation</u>	Pilot
<u>2nd Lt. J.E. Collins</u>	Co-P
<u>2nd Lt. C.L. Seckinger</u>	Nav.
<u>2nd Lt. M.B. Null</u>	Bomb
<u>Sgt. B.M. Brown</u>	Radi
<u>Sgt. C.E. Duggan</u>	Top 5
<u>Sgt. J.E. Bowman</u>	Ball
<u>Sgt. W. Talcus</u>	R/W
_____	L/W
<u>Sgt. L.L. Smith</u>	Tail

2. TARGET ATTACKED:

Primary Time:  
 Alternate Height:  
 Last Resort Heading:  
 (circle)  
 Duration bomb run:

3. Number of BOMBS dropped on target: Jettisoned: All Returned: abortive:

4. Observed RESULTS OF BOMBING: (For this plane or others)

Own Bombs:

Any Nickels: Yes No  
 Number bombs dropped \_\_\_\_\_  
 Number Bombs returned \_\_\_\_\_

Other bombing:

5. Any PHOTOGRAPHS taken: Yes? No?

6. GROUND TARGETS ATTACKED BY GUNFIRE AND RESULTS:

7. ROUTE: (If different than ordered) (If ABORTIVE give time, place, height of turn; reason for returning early, and Disposition of bombs.)

OK with Grp. Came in at Orfordness - then to base

8. WEATHER: (If it affected mission) Clear over chan. Clouds appearing over cont.

9. FLAK: Encountered on way out, at target and on way home.

Time	Place	Height of A/C	Type (light heavy), intense, moderate or slight.	Color of Bursts	Location Bursts in relation to A/C	Accuracy

Crew observations about Flak: \_\_\_\_\_



DECLASSIFIED PER EXECUTIVE ORDER 12356, Section 3.3, 115005  
 By RLB/BAC NARA Date 1/8/91

INTERROGATION FORM

31

Squadron 367 ~~#####~~ ~~#####~~ A/C Number 515 Let : 0 Date 29/11/44

Bomb Load 12/500 H.E. Incend.

Position in Formation

40 "B"

Time Took Off 0919 Time Landed 1606

	X	X	X	(X)	
X	X	X	X	X	X
X	X	X	X	X	X
X	X	X	X	X	X

HIGH

1. HOT NEWS to be phoned in? Yes  No

Details:

CREW: Give Rank and Initials

Friendly A/C in any kind of distress:  
(Give position, time, altitude, full details)

1st Lt. Cardon, R.L.	✓	Pilot
1st Lt. Prokop, L.P.	✓	Co-p
1st Lt. Kaufman, W.B.	✓	Nav.
1st Lt. Kelly, P.E.	✓	Bomb
T/Sgt. Fox, E.S.	✓	Radi
T/Sgt. Clites, F.A.	✓	Top
S/Sgt. Crede, R.E.	✓	Ball
T/Sgt. Popozinski, W.J.	✓	R/W
	✓	L/W
T/Sgt. Miller, H.I.	✓	Tail

2. TARGET ATTACKED:

Primary Time: 1202  
 Alternate Height: 25,500  
 Last Resort Heading: 014°M.  
 Duration Bomb Run:

T/Sgt. Fox, E.S.	✓	Radi
T/Sgt. Clites, F.A.	✓	Top
S/Sgt. Crede, R.E.	✓	Ball
T/Sgt. Popozinski, W.J.	✓	R/W
	✓	L/W
T/Sgt. Miller, H.I.	✓	Tail

3. Number of BOMBS dropped on target Jettisoned: Returned: Abortive:

4. Observed RESULTS OF BOMBING: (For this plane or others)

Own Bombs:

107101

Other Bombing:

Any Nickels: Yes  No  
 Number bombs dropped \_\_\_\_\_  
 Number Bombs returned \_\_\_\_\_

5. Any PHOTOGRAPHS taken:  Yes? No?

6. GROUND TARGETS ATTACKED BY GUNFIRE AND RESULTS:

7. ROUTE: (If different than ordered) (If ABORTIVE give time, place, height of turn; reason for returning early, and Disposition of bombs.)

S 7 course left target

8. WEATHER: (If it affected mission) 10710 - no con tr. 9° E then 10

9. FLAK: Encountered on way out, at target and on way home.

15,000'

Time	Place	Height of A/C	Type (light or heavy), intense, moderate or slight.	Color of Bursts	Location of Bursts in relation to A/C	Accuracy
------	-------	---------------	---	-----------------	---------------------------------------	----------

out at coast - major -

yes

juvile obs.

Crew observations about Flak:

as usual obs.

INTERROGATION FORM

SQUADRON 367 ~~#####~~ A/C Number 563 Lt N Date 29/11/44

Bomb Load 10/T-226 ✓ H.E. Incend.

Position in Formation 40 "B"

NICKLES

Time Took Off 0919 Time Landed 1635

	X	X	X	X
X	X	X	X	⊗
*		X	X	*
X	*			X

HIGH

1. HOT NEWS to be phoned in? Yes  No   
Details: .

CREW: Give Rank and Initials

Friendly A/C in any kind of distress:  
(Give position, time, altitude, full details)

2nd Lt. Davis, W.J. ✓ Pilot

2nd Lt. Daley, V.F. ✓ Co-1

2nd Lt. Holland, D.J. ✓ Nav.

S/Sgt. Meyer, C.L. ✓ Bomb

T/Sgt. Mahoney, T.M. ✓ Radi

T/Sgt. Hammond, P.H. ✓ Top

S/Sgt. <sup>F</sup>Pyssen, G.E. ✓ Ball

S/Sgt. Martinez, J.L. ✓ R/W

\_\_\_\_\_ ✓ L/W

S/Sgt. Revis, J. (NMI) ✓ Tail

2. TARGET ATTACKED:

Primary Time: 13 01 1/2

Alternate Height: 26, 000

Last Resort Heading: 020°M  
(circle)

Duration Bomb Run:

3. Number of BOMBS dropped on target. Jettisoned: Returned: Abortive:

4. Observed RESULTS OF BOMBING: (For this plane or others)

Own Bombs: \_\_\_\_\_

Any Nickels:  Yes  No

Number bombs dropped \_\_\_\_\_

Number Bombs returned \_\_\_\_\_

Other bombing: \_\_\_\_\_

5. any PHOTOGRAPHS taken: Yes?  No?

6. GROUND TARGETS ATTACKED BY GUNFIRE AND RESULTS:

7. ROUTE: (If different than ordered). (If ABORTIVE give time, place, height of turn; reason for returning early, and Disposition of bombs.)

8. WEATHER: (If it affected mission) 10710 - Light - Non Prev. Cntd.

9. FLAK: Encountered on way out, at target and on way home.

Time	Place	Height of A/C	Type (light heavy), intense, moderate or slight.	Color of Bursts	Location of Bursts in relation to A/C	Accuracy
------	-------	---------------	--	-----------------	---------------------------------------	----------

Coast in & out

Crew observations about Flak: \_\_\_\_\_

DECLASSIFIED PER EXECUTIVE ORDER 12356, Section 3.3, 1.5005  
By RLB/BAC NARA Date 1/8/94

INTERROGATION FORM

33

SQUADRON 367 A/C Number 578 Lat D Date 29/11/44

Bomb Load 12/500 H.E. Incend. Position in Formation

Time Took Off 0919 Time Landed

Formation grid with X marks and circled X, plus handwritten '40 B' and '1419H'

1. HOT NEWS to be phoned in? Yes No

Handwritten notes: '1205 1/2 rights for near wall. Explain on ground. Nochtel' and a large scribble.

CREW: Give Rank and Initials

Friendly A/C in any kind of distress: (Give position, time, altitude, full details)

- List of crew members with ranks and initials: 2nd Lt. Conlin, J.C., 2nd Lt. Rowley, K.R., 2nd Lt. Malay, R.E., S/Sgt. Smith, C.G., T/Sgt. Presti, D.L., T/Sgt. Collins, E.F., S/Sgt. Ammar, C.A., S/Sgt. Joslin, L.G., S/Sgt. Hulme, E.H.

2. TARGET ATTACHED:

Primary Time: 1302
Alternate Height: 25500
Last Resort Heading: D16 201
Duration Bomb Run:

3. Number of BOMBS dropped on target. All Cottoned: Returned: Abortive:

4. Observed RESULTS OF BOMBING: (For this plane or others)

Own Bombs:

Handwritten note: 'broken up for black smoke'

Other Bombing:

Any Nickels: Yes No
Number bombs dropped
Number Bombs returned

5. ANY PHOTOGRAPHS taken: Yes? No?

6. GROUND TARGETS ATTACKED BY GUNFIRE AND RESULTS:

7. ROUTE: (If different than ordered) (If ABORTIVE give time, place, height of turn; reason for returning early, and Disposition of bombs.)

Handwritten note: 'with formation'

8. WEATHER: (If it affected mission)

Handwritten note: 'Picked up 1/4 hr after 5239-0802'

9. FLAK: Encountered on way out, at target and on way home.

Table with columns: Time, Place, Height of A/C, Type (light heavy, intense, moderate or slight), Color of Bursts, Location of Bursts in relation to A/C, Accuracy

Handwritten entry: 'none at moderate height at target all barrage - shooting at target'

Crew observations about Flak:

Handwritten notes: 'at crest out above in flak. more accounts going out (slight) also from wall in and out (slight)'

DECLASSIFIED PER EXECUTIVE ORDER 12356, Section 3.3, 15005
By RLB/BAC
Date 1/8/94
NARA

DECLASSIFIED PER EXECUTIVE ORDER 12356, Section 3.3, 15005  
 BY RLB/BAC MABA Date 1/8/91

INTERROGATION FORM

34

SQUADRON ~~XXXXXXXX~~ Co9 ~~XXXXX~~ A/C Number 143 Letter P Date 29/11/44

Bomb Load 12 x 500 H.E. Incend.

Position in Formation

Time Took Off 0919 Time Landed 1425

	X	X	X	X	
X	X	X	X	X	X
*	X	X	X	*	*
*	*			*	*

40 "B"  
HIGH

1. HOT NEWS to be phoned in? Yes  No

Details:

CREW: Give Rank and Initials

Friendly A/C in any kind of distress:  
(Give position, time, altitude, full details)

1st Lt. G.M. Carrazzone	Pilot
2nd Lt. L.H. Reinhart	Co-P
2nd Lt. H.S. Israel	Nav.
2nd Lt. J. Bodnaruk	Bomb
T/Sgt. P.M. Gallagher	Radi
T/Sgt. G.T. Keith	Top
S/Sgt. I.H. Fitterman	Ball
S/Sgt. R.A. Holthaus	R/W
	L/W
S/Sgt. N.P. Carlson	Tail

2. TARGET ATTACHED:

Primary Time: 1301 1/2  
 Alternate Height: 25300  
 Last Resort Heading: 016°M  
 (circle)  
 Duration Bomb Run:

3. Number of BOMBS dropped on target: Target Jettisoned: Returned: abortive:

4. Observed RESULTS OF BOMBING: (For this plane or others)

Own Bombs: 10700

Chaff  
oh

Other Bombing:

Any Nickels: Yes  No  
 Number bombs dropped \_\_\_\_\_  
 Number Bombs returned \_\_\_\_\_

5. any PHOTOGRAPHS taken: Yes?  No?

6. GROUND TARGETS ATTACKED BY GUNFIRE AND RESULTS:

7. ROUTE: (If different than ordered) (If ALORIVE give time, place, height of turn; reason for returning early, and Disposition of bombs.)

as is.

8. WEATHER: (If it affected mission) moment alt. 10700 occasionally

9. FLAK: Encountered on way out, at target and on way home.

at 15,000!

Time	Place	Height of A/C	Type (light heavy), intense, moderate or slight.	Color of Bursts	Location Bursts in relation to A/C	Accuracy
------	-------	---------------	--	-----------------	------------------------------------	----------

Target - Barrage before they arrived No shot into Chaff screen which was excellent.

Crew observations about Flak:

INTERROGATION FORM

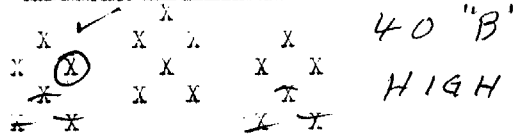
35

SQUADRON ~~00500068X~~ 9 ~~0000~~ A/C Number 185 Letter J Date 29/11/44

Bomb Load 12 x 500 H.E. Incend.

Position in Formation

Time Took Off 0919 Time Landed 1631



1. HOT NEWS to be phoned in? Yes  No   
Details:

CREW: Give Rank and Initials

Friendly A/C in any kind of distress:  
(Give position, time, altitude, full details)

- 2nd Lt. N.A. Erne ✓ Pilot
- 2ndLt. A.H. Miller ✓ Co-P
- 2ndLt. F.M. Hudson ✓ Nav.
- 2ndLt. G.D. Good ✓ Bomb
- Sgt. R.R. Gattis ✓ Radi
- Sgt. L.A. Marchese ✓ Top E
- Sgt. S.G. Parton ✓ Ball
- Sgt. G.R. Holdson ✓ R/W
- Sgt. R.L. Tiff ✓ L/W
- Sgt. R.L. Tiff ✓ Tail

2. TARGET ATTACKED:

Primary Time: 1302.  
 Alternate Height: 25,200.  
 Last resort Heading: 010°M.  
 (circle)  
 Duration bomb run:

3. Number of BOMBS dropped on target: 12 Jettisoned: Returned: abortive:

4. Observed RESULTS OF BOMBING: (For this plane or others)

Own Bombs: 10/10

Any Nickels: Yes  No   
 Number bombs dropped \_\_\_\_\_  
 Number Bombs returned \_\_\_\_\_

Other Bombing:

5. Any PHOTOGRAPHS taken: Yes?  No

6. GROUND TARGETS ATTACKED BY GUNFIRE AND RESULTS:

7. ROUTE: (If different than ordered) (If ALTERNATE give time, place, height of turn; reason for returning early, and Disposition of bombs.)

8. WEATHER: (If it affected mission) Two layers - Con to. above

9. FLAK: Encountered on way out, at target and on way home.

Time	Place	Height of A/C	Type (light or heavy), intense, moderate or slight.	Color of Bursts	Location of Bursts in relation to A/C	Accuracy

Crew observations about Flak:

DECLASSIFIED PER EXECUTIVE ORDER 12356, Section 3.3, 1-5005  
 By RLB/BAC Date 1/8/91 NARA

DECLASSIFIED PER EXECUTIVE ORDER 12356, Section 3.3, 115005  
 By RLB/BAC NARA Date 1/8/94

INTERROGATION FORM

36

SQUADRON ~~367000689~~ 369 ~~422000~~ A/C Number 600 Letter G Date 29/11/44

Bomb Load 12 x 500 H.E. Incend.

Position in Formation

Time Took Off 0919 Time Landed \_\_\_\_\_

	X	X	X	X	
⊙	X	X	X	X	40 "B"
	*	X	X	*	
	* X			* X	HIGH

1. HOT NEWS to be phoned in? Yes No  
 Details: \_\_\_\_\_

CREW: Give Rank and Initials

Friendly A/C in any kind of distress:  
 (Give position, time, altitude, full details)

- 2nd Lt. W.P. Rozett Pilot ✓
- 2nd Lt. L.L. Strode Co-P ✓
- 2nd Lt. J.H. Christenson Nav. ✓
- 2nd Lt. M.P. Kramer Bomb ✓
- S/Sgt. J.E. Durham Radi ✓
- S/Sgt. E.C. Hall Top ✓
- S/Sgt. W.A. Shipley Ball ✓
- S/Sgt. E.G. Arbeiter R/W ✓
- \_\_\_\_\_ L/W
- S/Sgt. R.H. Sheldon Tail ✓

2. TARGET ATTACKED:

Primary Time: 1302  
 Alternate Height: 25,500  
 Last Resort Heading: 25 mag  
 (circle)  
 Duration Bomb Run:  
 Burn - 08 -

3. Number of BOMBS dropped on target: Jettisoned: Returned: Abortive:

4. Observed RESULTS OF BOMBING: (For this plane or others)

Own Bombs:

Any Nickels: Yes No  
 Number bombs dropped \_\_\_\_\_  
 Number Bombs returned \_\_\_\_\_

Other Bombing:

5. Any PHOTOGRAPHS taken: Yes? No?

6. GROUND TARGETS ATTACKED BY GUNFIRE AND RESULTS:

7. ROUTE: (If different than ordered) (If ABORTIVE give time, place, height of turn; reason for returning early, and Disposition of bombs.)

8. WEATHER: (If it affected mission)

9. FLAK: Encountered on way out, at target and on way home.

Time	Place	Height of A/C	Type (light, heavy), intense, moderate or slight.	Color of Bursts	Location of Bursts in relation to A/C	Accuracy
------	-------	---------------	---	-----------------	---------------------------------------	----------

Coast out 5235-0437 - 3 gun Battery -  
 Meyer mac, low range - target  
 Zwalle - obs -  
 Crew observations about Flak: \_\_\_\_\_